

The Blandford Series of Yarbrough Genealogical Records



Old Blandford Church, Petersburg, Virginia
{Richard Yarborough's grave marker is bottom center, above.}

Volume 7 **Ancestors of William Thomas Yarbrough** **References include** **Richard Yarbrough, Edmond Yarbrough, Aquila** **Yarbrough,** **Levi William Yarbrough, William Thomas Yarbrough** **Letters from Family Genealogists**

Compiled by Rea Donohue

Leonard Yarbrough, Editor

June 2015

Dedication

Whether we wish to admit it or not, we are the future of our ancestors, as our descendants are our future. We owe our descendants our dreams and bequeath to them the legacy of our collective accomplishments – nothing more and nothing less. To our descendants, we charge you with the honoring of your heritage. Your ancestors were hardy folk, god-fearing and plain spoken, and who recognized that nothing was due them except that which they themselves earned. They were not ashamed to profess their belief in God, their country and the American ideal. Of course, there were a few rascallions in our collective history, but neither more nor less than in any other family.

We too easily forget what it took to forge a life in a new world, one rife with peril and with little at hand but a steadfast determination to not only survive but to thrive. Our ancestors bequeathed us with their genes, aspirations and talents. It is therefore fitting that the Blandford Series of Yarbrough Family Records be dedicated to them for making it possible for us to be who we are.

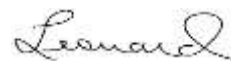
To paraphrase Robert Kincaid¹, “The dreams they had were good ones. They didn’t all come true, but they were worth having, all the same.”



Acknowledgement

The Yarbrough Association is greatly indebted to the vision and efforts of Cathy Y. Walker and William A. (Bill) Yarbrough, the late president and vice-president of the YNGHA, respectively, for beginning the project to digitize the 150+ volumes of records accumulated over the life of the Association. Fulfilment of the project was through the efforts of a number of officers and members, including Bill’s son Mark, Rachel and Don Yarbrough, Hal Yarbrough, Jan and Jim Yarbrough, Ann and Al Bush, Elaine and Lyle Wolf, Joan Y. Singlaub, and Joanne and Bill Augspurger.

It was my privilege to be a part of this dedicated team.



Leonard Yarbrough,
Editor
Blountsville, AL
June 14, 2015

¹ *The Bridges of Madison County*, Robert James Waller, Warner Books, Inc., New York, 1992

Preface

These records are the legacy of our Yarbrough family researchers, to whom much is owed. The known family researchers include Jean Baker, Ann Y. Broadbent, Mary Y. Daniel, Frances (Rea) Donohue, Betty Humrighouse, Pauline Gray, Evelyn Goble, Nelle Morris Jenkins, Ophelia Kessler, Frances Lockwood, Karen Mazock Renee Smelley, Dorothy Svec, Jeanette Wilson, Cleveland “Cy” Yarborough, Edna Yarbrough, George A. Yarbrough, and Robert Price Yarbrough.

The originals of these volumes are being kept for the benefit of future generations by the Williamson County Library, Franklin, Tennessee.

No claims of accuracy or authentication of the material herein are made or may be assumed. Many of these records have been superseded by subsequent research. Hence, there are records which are erroneous and unreliable; it would have been a Herculean task to attempt to correct all of them. Fortunately, there are only a few critical genealogical facts that are involved, and which are correctly stated here:

- Richard (the Immigrant) Yarborough was never married to Frances Proctor;
- Ambrose Yarbrough did not immigrate from Yorkshire; he is now believed to be a descendant of Richard the Immigrant;
- There are so far only two proven sons of Old Richard – John and Richard II;
- There is so far no evidence proving Joshua Yarborough I to be a descendant of Old Richard.
- The “Old Country” referred to in old documents and letters is the Colony of Virginia, not England or the Old World.
- There were not seven brothers who immigrated from “the old country”; in fact, it now appears there were three brothers and four sons of the brothers. Which were the fathers and which were the sons are so far unknown.

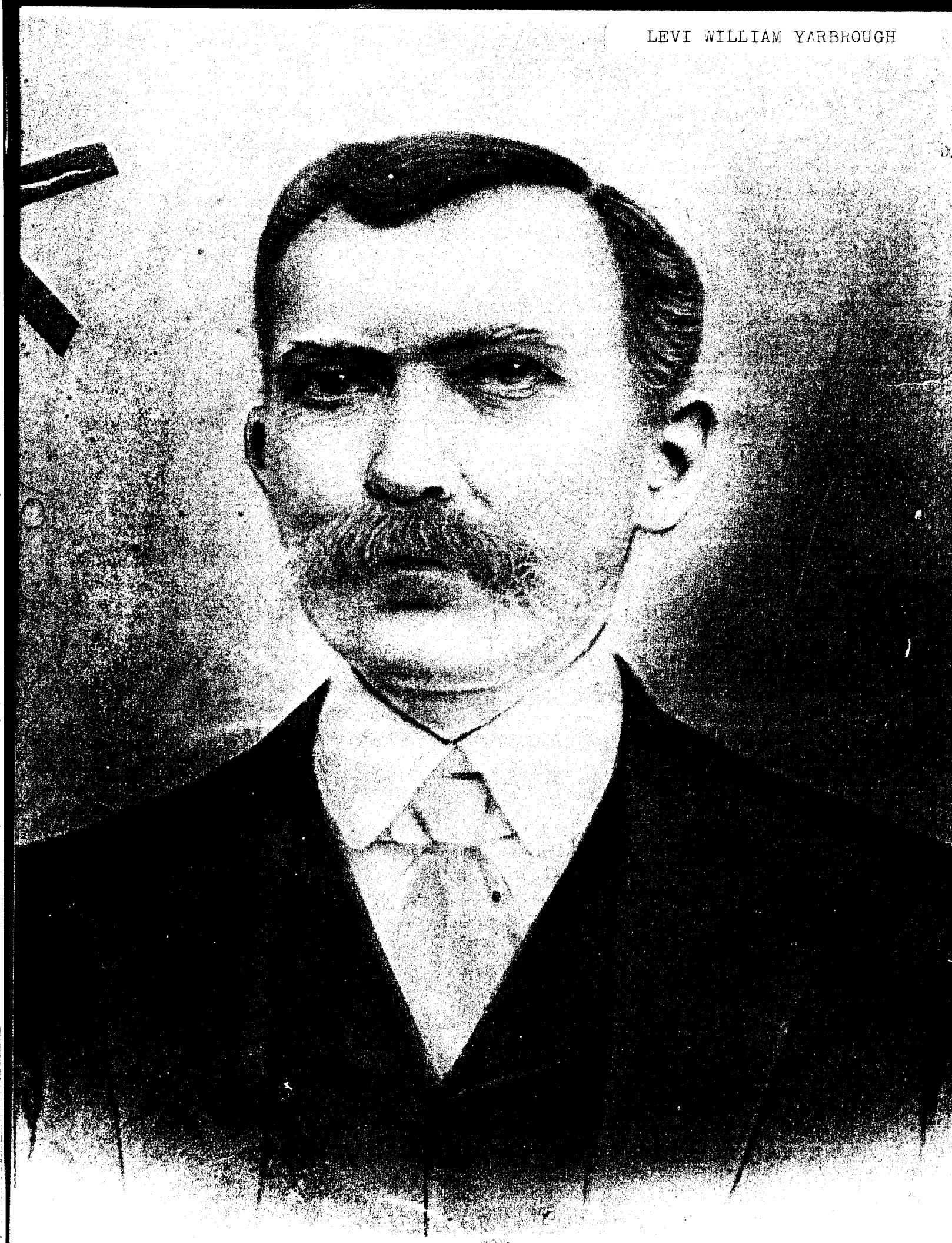
In spite of these inaccuracies, these records comprise much of our history and some of our accomplishments. There are pages whose print quality is so poor that word recognition was not possible. In spite of that, at least partial capability for searching these volumes is provided, as well as an index to each volume. Nonetheless, the viewer is cautioned to perform his/her own due diligence in connection with any use of this material.

The various spellings of the Yarbrough surname have never been applied consistently, even within a given family. To the extent possible, the names in the index reflect the names used on the source pages; where it wasn't clear as to which might be the proper spelling, the spelling used is “Yarbrough”.

The material contained herein is subject to the copyright laws of the United States. Material may be freely used by Yarbrough family researchers so long as proper attribution to the [Yarbrough National Genealogical & Historical Association, Inc.](#) is given. This material, in whole or in part, may not be used for any other purposes without the express written permission of the Yarbrough National Genealogical & Historical Association.

We welcome the [submission](#) of any Yarbrough family information that can be added to our growing data base. More information about the extended Yarbrough families can be found at our website, <http://www.yarbroughfamily.org>. If you are a Yarbrough or a member of one of our allied families, we invite you to [join our family association](#).

LEVI WILLIAM YARBROUGH



Ancestors of William Thomas Yarbrough

Edmund Yarbrough
b: Abt 1762 in Anson, North Carolina
m: 5 December 1789 in Davidson, North Carolina
d: Abt 1850 in Decaturville, Decatur Co., Tennessee

Aquilla Yarbrough
b: Abt 1788 in Anson, North Carolina

Sophia Goswick (Gossett?)
b: Abt 1766 in Baltimore, Maryland
d: 7 August 1841 in Decaturville, Decatur Co., Tennessee

Levi William Yarbrough
b: 19 February 1834 in Humphreys Co., Tennessee
m: 7 May 1855 in Tennessee
d: Bef. 1910 in White Co., Arkansas

Winnie

William Thomas Yarbrough
b: 28 August 1857 in Coffee Landing, Hardin Co., Tennessee
m: 4 April 1875 in White Co., Arkansas
d: 15 October 1924 in Rule, Haskell Co., Texas

Agness C. Yarbrough
b: 9 November 1834 in Tennessee
d: 23 August 1871 in White Co., Arkansas

Ancestors of Frances Ella Smith

James Anthony Smith

b: in Tennessee

m: in Humphreys Co., Tennessee

d: in White Co., Arkansas

Frances Ella Smith

b: 1856 in Humphreys Co., Tennessee

m: 4 April 1875 in White Co., Arkansas

d: 1899 in White Co., Arkansas

Louisa Hart

b: in Halifax Co., Virginia

d: in White Co., Arkansas

Ancestors of William Thomas Yarbrough

Edmund Yarbrough
b: Abt 1762 in Anson, North Carolina
m: 5 December 1789 in Davidson, North Carolina
d: Abt 1850 in Decaturville, Decatur Co., Tennessee

Aquilla Yarbrough
b: Abt 1788 in Anson, North Carolina

Sophia Goswick (Gossett?)
b: Abt 1766 in Baltimore, Maryland
d: 7 August 1841 in Decaturville, Decatur Co., Tennessee

Levi William Yarbrough
b: 19 February 1834 in Humphreys Co., Tennessee
m: 7 May 1855 in Tennessee
d: Bef. 1910 in White Co., Arkansas

William Thomas Yarbrough
b: 28 August 1857 in Coffee Landing, Hardin Co., Tennessee
m: 4 April 1875 in White Co., Arkansas
d: 15 October 1924 in Rule, Haskell Co., Texas

Winnie

Agness C. Yarbrough
b: 9 November 1834 in Tennessee
d: 23 August 1871 in White Co., Arkansas

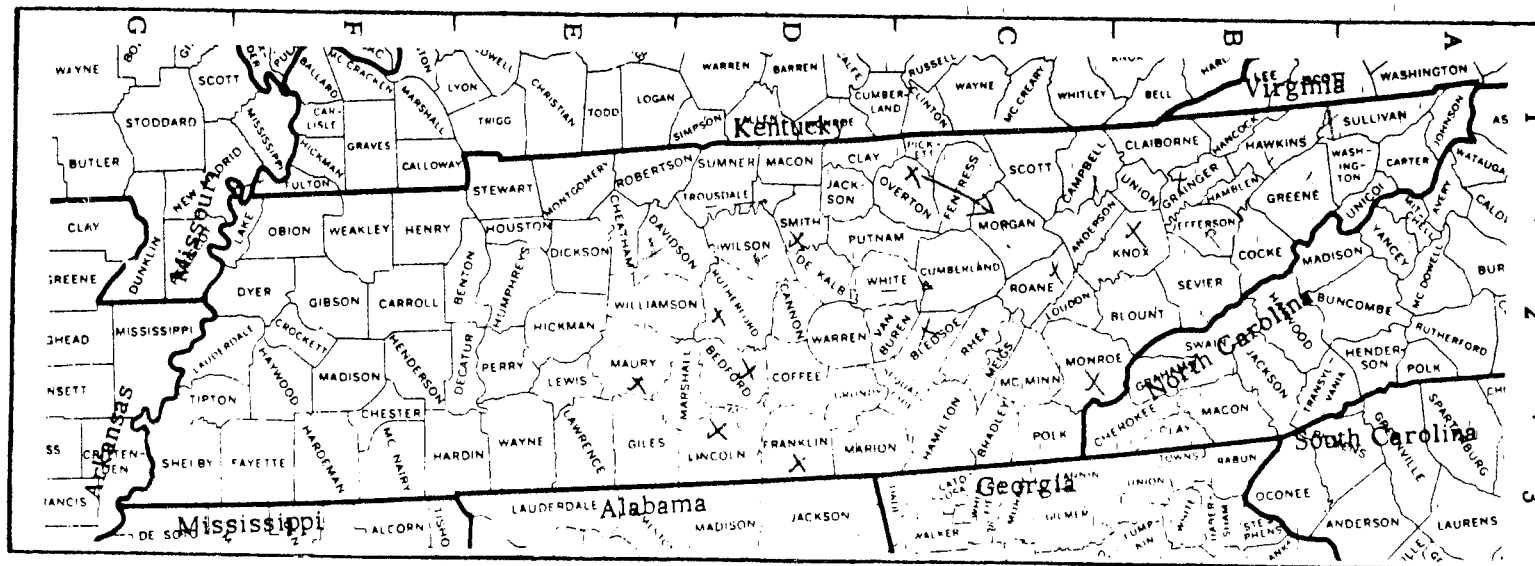


WILLIAM THOMAS YARBROUGH
Born 28 AUG 1857 Hardin CO TN
Died 15 OCT 1924 at 1914 TX

LEVI WILLIAM YARBROUGH (Ancestor of Lecil Brown)
Born in HUMPHREYS CO. TN
in 1834

HE IS ON 1860 CENSUS IN (A son WILLIAM THOMAS born in
HARDIN COUNTY HARDIN CO. in 1857)

FAMILY MOVED TO WHITE COUNTY, ARKANSAS
in 1869 or 1870



COUNTY MAP FOR THE STATE OF TENNESSEE

Tennessee

usband: William Thomas Yarbrough

Born: 28 August 1857	in: Coffee Landing, Hardin Co., Tennessee
Married: 4 April 1875	in: White Co., Arkansas
Died: 15 October 1924	in: Rule, Haskell Co., Texas
Father: Levi William Yarbrough	
Mother: Agness C. Yarbrough	
Other Spouses: Annie Wyatt	

Wife: Frances Ella Smith

Born: 1856	in: Tennessee
Died: 1899	in: White Co., Arkansas
Father: James Anthony Smith	
Mother: Louisa Hart	
Other Spouses:	

CHILDREN

Name: James Levi Yarbrough	
Born: 17 July 1876	in: Albion, White Co., Arkansas
Married: 10 October 1900	in: Albion, White Co., Arkansas
Died: 21 October 1961	in: Albion, White Co., Arkansas
Spouse: Nora Lou Wyatt	

Name: Ella Yarbrough	
Born: 1878	in: died as a child
Married:	in:
Died:	in:
Spouse:	

Name: David Edward Yarbrough	
Born: 4 January 1881	in: Seary White Co., Arkansas
Married: 23 November 1902	in: Mt. Pisgah White Co., Arkansas
Died: 5 December 1927	in: Rule, Haskell Co., Texas
Spouse: Bertha Dean Gentry	

Name: Odus Columbus Yarbrough	
Born: 19 August 1885	in: White Co., Arkansas
Married:	in:
Died: 12 June 1959	in: White Co., Arkansas
Spouse: Katie Walls	

Name:	
Born:	in:
Married:	in:
Died:	in:
Spouse:	

Name:	
Born:	in:
Married:	in:
Died:	in:
Spouse:	

Name:	
Born:	in:
Married:	in:
Died:	in:
Spouse:	

Name:	
Born:	in:
Married:	in:
Died:	in:
Spouse:	

White County Arkansas

I, a Minister of the Gospel
hereby certify that on the ~~24~~⁴ day
of April 1875 at said County
I did solemnize the rites and
publish the laws of Matrimony
between Thomas Yarker and
Miss F. E. Smith both of lawful
age and of the County of ~~several~~
Given under my hand
this 19 day of May 1875
J. J. Griffin

Wm G
Mc G S

Thomas Yarden to L. E. Smith

White County Arkansas

I, a minister of the Gospel hereby Certify
that on the 4 day of April 1875 at said County
I did solemnize the rites and publish the bonds
of Matrimony between Thomas Yarden and Miss
L. E. Smith both of lawful age and of the
County aforesaid

Given under my hand

this 19th day of May 1875

J. P. Griffin M. G.
M. E. C. S.

Ezell Davis to Eliza Davis

This is to Certify that J. R. S. Covert a regular
Ordained Minister of the Gospel in the Cumberland
Presbyterian Church my Credentials being filed in
the records of the said Church

Yarber, Jane W 23 Miss
 Anna N. 20 4/12 Arkansas

1880 CENSUS INDEX
 DEPARTMENT OF COMMERCE
 BUREAU OF THE CENSUS

HALLOW PRINTING CO. NEW YORK 511 2nd Ave

Y616
 Yarbrough Thomas
 (HEAD OF FAMILY)
 White Male 31
 (COLOR) (SEX) (AGE)
 (COUNTY) (CITY) (STREET) (HOUSE NO.)
 ARK (BIRTHPLACE)
 Mason (CITY)

OTHER MEMBERS OF FAMILY

NAME	RELATIONSHIP	AGE	BIRTHPLACE
Yarbrough Grace		24	Ark
James		4	Ark
Ella		4	Ark

Enumerated with Smith, Louise

1880 CENSUS INDEX
 DEPARTMENT OF COMMERCE
 BUREAU OF THE CENSUS

NEW YORK 511 2nd Ave

THIS IS THE 1880 CENSUS
 Note that WM. THOMAS
 YARBROUGH birthplace
 shown as ARKANSAS (wrong)

Y620
 Yarbrough Thomas
 (HEAD OF FAMILY)
 (COUNTY) (CITY) (STREET) (HOUSE NO.)
 ARK (BIRTHPLACE)
 (CITY)

VOL 11 R.D. 137
 SHEET 32 LINE 18

- Tenn	Tenn	Tenn	13
- Ark	Tenn	Tenn	14
- Ark	Ark	Ark	15
- Tenn	Tenn	Tenn	16
- Ark	Ark	Ark	17
- Tenn	Tenn	Tenn	18
- Ark	Ark	Ark	19
- Tenn	Tenn	Tenn	20
- Tenn	Tenn	Tenn	21
- Ark	Ark	Ark	22
- Tenn	Tenn	Tenn	23
- Ark	Ark	Ark	24
- Tenn	Tenn	Tenn	25
- Ark	Ark	Ark	26
- Tenn	Tenn	Tenn	27
- Tenn	Tenn	Tenn	28
- Tenn	Tenn	Tenn	29
- Tenn	Tenn	Tenn	30
- Ark	Ark	Ark	31
- Tenn	Tenn	Tenn	32
- Ark	Ark	Ark	33
- Tenn	Tenn	Tenn	34
- Ark	Ark	Ark	35
- Tenn	Tenn	Tenn	36
- Ark	Ark	Ark	37
- Tenn	Tenn	Tenn	38
- Ark	Ark	Ark	39
- Tenn	Tenn	Tenn	40
- Ark	Ark	Ark	41
- Tenn	Tenn	Tenn	42
- Ark	Ark	Ark	43
- Tenn	Tenn	Tenn	44
- Ark	Ark	Ark	45
- Tenn	Tenn	Tenn	46
- Ark	Ark	Ark	47
- Tenn	Tenn	Tenn	48
- Ark	Ark	Ark	49
- Tenn	Tenn	Tenn	50
- Ark	Ark	Ark	51
- Tenn	Tenn	Tenn	52
- Ark	Ark	Ark	53
- Tenn	Tenn	Tenn	54
- Ark	Ark	Ark	55
- Tenn	Tenn	Tenn	56
- Ark	Ark	Ark	57
- Tenn	Tenn	Tenn	58
- Ark	Ark	Ark	59
- Tenn	Tenn	Tenn	60
- Ark	Ark	Ark	61
- Tenn	Tenn	Tenn	62
- Ark	Ark	Ark	63
- Tenn	Tenn	Tenn	64
- Ark	Ark	Ark	65
- Tenn	Tenn	Tenn	66
- Ark	Ark	Ark	67
- Tenn	Tenn	Tenn	68
- Ark	Ark	Ark	69
- Tenn	Tenn	Tenn	70
- Ark	Ark	Ark	71
- Tenn	Tenn	Tenn	72
- Ark	Ark	Ark	73
- Tenn	Tenn	Tenn	74
- Ark	Ark	Ark	75
- Tenn	Tenn	Tenn	76
- Ark	Ark	Ark	77
- Tenn	Tenn	Tenn	78
- Ark	Ark	Ark	79
- Tenn	Tenn	Tenn	80
- Ark	Ark	Ark	81
- Tenn	Tenn	Tenn	82
- Ark	Ark	Ark	83
- Tenn	Tenn	Tenn	84
- Ark	Ark	Ark	85
- Tenn	Tenn	Tenn	86
- Ark	Ark	Ark	87
- Tenn	Tenn	Tenn	88
- Ark	Ark	Ark	89
- Tenn	Tenn	Tenn	90
- Ark	Ark	Ark	91
- Tenn	Tenn	Tenn	92
- Ark	Ark	Ark	93
- Tenn	Tenn	Tenn	94
- Ark	Ark	Ark	95
- Tenn	Tenn	Tenn	96
- Ark	Ark	Ark	97
- Tenn	Tenn	Tenn	98
- Ark	Ark	Ark	99
- Tenn	Tenn	Tenn	100

Ark Co
Arkansas
1880

[illegible]

900 CENSUS
HITE CO ARK

		James A.	Wife	w	F	Mar	1824	31	m	18	6	5	Tennessee	2
		William R.	Son	w	m	Mar	1886	13	d				Arkansas	6
		Lillie B.	Daughter	w	F	May	1888	12	d				Arkansas	6
		George D.	Son	w	m	Mar	1892	8	d				Arkansas	6
		James A.	Son	w	m	Aug	1896	3	p				Arkansas	6
		Mary A.	Daughter	w	F	Aug	1898	1	d				Arkansas	6
4	4	Sutton William	Head	w	m	Dec	1842	52	m	26			Alabama	6
4	4	Mary A.	Wife	w	F	Apr	1847	55	m	26	1	1	Tennessee	6
5	5	Wyatt James	Head	w	m	Nov	1850	44	m	24			Mississippi	6
		Caroline	Wife	w	F	July	1846	40	m	24	7	4	Alabama	6
		Nora E.	Daughter	w	F	May	1880	20	d				Arkansas	6
		Julia R.	Son	w	m	Apr	1886	14	d				Arkansas	6
		William R.	Son	w	m	Sept	1888	11	d				Arkansas	6
6	6	Patterson William	Head	w	m	Nov	1849	60	m	32			Alabama	6
		Martha J.	Wife	w	F	May	1857	49	m	32	8	5	Arkansas	6
		Archie W.	Son	w	m	Apr	1880	20	d				Arkansas	6
		Nash E.	Son	w	m	Feb	1888	12	d				Arkansas	6
		Andrews Francis	Wife	w	F	Jan	1830	72	wf	2	2		Tennessee	6
7	7	Garbrough William	Head	w	m	Aug	1852	42	wf				Tennessee	6
		James L.	Son	w	m	July	1876	23	d				Arkansas	6
		Davis G.	Son	w	m	Jan	1880	20	d				Arkansas	6
		Olus E.	Son	w	m	Aug	1880	15	d				Arkansas	6
8	8	Baker Phemie	Head	w	m	Feb	1849	31	m	11			Arkansas	6
		Mary R.	Wife	w	F	Feb	1873	27	m	11	8	7	Arkansas	6
		William R.	Son	w	m	June	1892	8	d				Arkansas	6
		Adva A.	Son	w	m	Dec	1892	6	p				Arkansas	6
		Edner A.	Son	w	m	Aug	1894	5	d				Arkansas	6
		Roy A.	Son	w	m	Dec	1895	4	d				Arkansas	6
		Harner	Son	w	m	July	1897	2	d				Arkansas	6
		Oliver	Son	w	m	Oct	1898	1	d				Arkansas	6
		Elvira	Son	w	m	Apr	1900	1	d				Arkansas	6
9	9	Baker Thomas	Head	w	m	Aug	1836	53	wf				Tennessee	6
		Mathis Jennie A.	Daughter	w	F	Dec	1872	27	wf	2	1		Arkansas	6
		Arthur D.	Son	w	m	Nov	1880	5	d				Arkansas	6
10	10	Arthur James	Head	w	m	May	1822	32	m	7			Alabama	6
		Caroline	Wife	w	F	Jan	1826	24	m	7	3	3	Kentucky	6
		George W.	Son	w	m	Jan	1846	6	p				Arkansas	6
		Rosa A.	Daughter	w	F	Jan	1856	4	d				Arkansas	6
		Harriet B.	Son	w	m	Nov	1856	1	d				Arkansas	6
		John W.	Son	w	m	Nov	1858	1	d				Louisiana	6
		Mary B.	Wife	w	F	May	1860	2	d				Arkansas	6

[illegible]

TWELFTH CENSUS OF THE UNITED STATES

SCHEDULE No. 1.—POPULATION.

Name of Institution

Name of Institution

day of June, 1900, present Board

Enumeration

NAME	RELATION	PERSONAL DESCRIPTION			NATIVITY			CITIZENSHIP			OCCUPATION, TRADE, PROFESSION		
		Age at last birthday	Sex	Color	Place of birth of father	Place of birth of mother	Place of birth of person	Year of immigration to the United States	Year of naturalization	Year of citizenship	Of each person and of each family	Of each person and of each family	Of each person and of each family
1	Wife	1862	F	W	Mississippi	Georgia	Mississippi	1862	1862	1862	Farmer	Farmer	Farmer
2	Daughter	1882	F	W	Georgia	Georgia	Georgia	1882	1882	1882	Farmer	Farmer	Farmer
3	Son	1882	M	W	Georgia	Georgia	Georgia	1882	1882	1882	Farmer	Farmer	Farmer
4	Daughter	1882	F	W	Georgia	Georgia	Georgia	1882	1882	1882	Farmer	Farmer	Farmer
5	Son	1882	M	W	Georgia	Georgia	Georgia	1882	1882	1882	Farmer	Farmer	Farmer
6	Daughter	1882	F	W	Georgia	Georgia	Georgia	1882	1882	1882	Farmer	Farmer	Farmer
7	Son	1882	M	W	Georgia	Georgia	Georgia	1882	1882	1882	Farmer	Farmer	Farmer
8	Daughter	1882	F	W	Georgia	Georgia	Georgia	1882	1882	1882	Farmer	Farmer	Farmer
9	Son	1882	M	W	Georgia	Georgia	Georgia	1882	1882	1882	Farmer	Farmer	Farmer
10	Daughter	1882	F	W	Georgia	Georgia	Georgia	1882	1882	1882	Farmer	Farmer	Farmer
11	Son	1882	M	W	Georgia	Georgia	Georgia	1882	1882	1882	Farmer	Farmer	Farmer
12	Daughter	1882	F	W	Georgia	Georgia	Georgia	1882	1882	1882	Farmer	Farmer	Farmer
13	Son	1882	M	W	Georgia	Georgia	Georgia	1882	1882	1882	Farmer	Farmer	Farmer
14	Daughter	1882	F	W	Georgia	Georgia	Georgia	1882	1882	1882	Farmer	Farmer	Farmer
15	Son	1882	M	W	Georgia	Georgia	Georgia	1882	1882	1882	Farmer	Farmer	Farmer
16	Daughter	1882	F	W	Georgia	Georgia	Georgia	1882	1882	1882	Farmer	Farmer	Farmer
17	Son	1882	M	W	Georgia	Georgia	Georgia	1882	1882	1882	Farmer	Farmer	Farmer
18	Daughter	1882	F	W	Georgia	Georgia	Georgia	1882	1882	1882	Farmer	Farmer	Farmer
19	Son	1882	M	W	Georgia	Georgia	Georgia	1882	1882	1882	Farmer	Farmer	Farmer
20	Daughter	1882	F	W	Georgia	Georgia	Georgia	1882	1882	1882	Farmer	Farmer	Farmer

Husband: James Levi Yarbrough

Born: 17 July 1876	in: Albion, White Co., Arkansas
Married: 10 October 1900	in: Albion, White Co., Arkansas
Died: 21 October 1961	in: Albion, White Co., Arkansas
Father: William Thomas Yarbrough	
Mother: Frances Ella Smith	
Other Spouses:	

Wife: Nora Lou Wyatt

Born: 5 May 1880	in: Albion, White Co., Arkansas
Died: 8 December 1967	in: Albion, White Co., Arkansas
Father: James Thadeaus Wyatt	
Mother: Caroline Tucker	
Other Spouses:	

CHILDREN

Name: Lester Lona Yarbrough	
Born: 20 August 1902	in: Albion, White Co., Arkansas
Married: 10 May 1924	in: Albion, White Co., Arkansas
Died: 7 November 1987	in: Hugely Hospital, Ft. Worth, Texas
Spouse: Kellis Forest Brown	

Name: Robert Cecil Yarbrough	
Born: 13 February 1906	in: Albion, White Co., Arkansas
Married: 12 October 1927	in: Faulkner Co., Arkansas
Died: 4 October 1993	in: Searcy, White Co., Arkansas
Spouse: Trudie Pugh	

Name: Celia Lucille Yarbrough	
Born: 13 February 1906	in: Albion, White Co., Arkansas
Married:	in:
Died: 19 January 1995	in: Searcy, White Co., Arkansas
Spouse: Bradford Eugene Stewart	

Name:	
Born:	in:
Married:	in:
Died:	in:
Spouse:	

Name:	
Born:	in:
Married:	in:
Died:	in:
Spouse:	

Name:	
Born:	in:
Married:	in:
Died:	in:
Spouse:	

Name:	
Born:	in:
Married:	in:
Died:	in:
Spouse:	

Name:	
Born:	in:
Married:	in:
Died:	in:
Spouse:	

THIS IS A PICTURE GIVEN TO ME
BY SHIRLEY YARBROUGH OLER
(granddaughter of DAVID
EDWARD YARBROUGH) who was
brother of JAMES LEVI YARBROU
my grandfather

DAVID EDWARD Y

JAMES LEVI Y



© Chickasha, Ind. 1911

Swain,

husband: David Edward Yarbrough

Born: 4 January 1881	in: Seary White Co., Arkansas
Married: 23 November 1902	in: Mt. Pisgah White Co., Arkansas
Died: 5 December 1927	in: Rule, Haskell Co., Texas
Father: William Thomas Yarbrough	
Mother: Frances Ella Smith	
Other Spouses:	

Wife: Bertha Dean Gentry

Born: 18 September 1885	in: White Co., Arkansas
Died: 8 January 1977	in: Rule, Haskell Co., Texas
Father: Robert Cornelius Gentry	
Mother: Donia James	
Other Spouses:	

CHILDREN

Name: Hazel Magdalena Yarbrough	
Born: 16 August 1903	in: Albion, White Co., Arkansas
Married: 14 August 1923	in:
Died: 12 November 1982	in:
Spouse: Verlon Almond	

Name: Desmond Arnold Yarbrough	
Born: 8 August 1905	in: Searcy, White Co., Arkansas
Married: 9 November 1928	in:
Died: 26 January 1957	in:
Spouse: Oleta Irene Smith	

Name: Clarence Edward Yarbrough	
Born: 24 September 1907	in: Chambersville, Collin Co., Texas
Married:	in:
Died:	in:
Spouse: Clarice Scoggins	

Name: Houston Yarbrough	
Born: 7 April 1910	in: Chambersville, Collin Co., Texas
Married:	in:
Died:	in:
Spouse: Maybella McCain	

Name: Glenn Yarbrough	
Born: 19 May 1912	in: Letona, White Co., Arkansas
Married:	in:
Died: 7 April 1949	in: Killed by hitchhiker
Spouse:	

Name: Myrtle Augusta Yarbrough	
Born: 25 February 1917	in: McKinney Collin Co., Texas
Married: 18 March 1940	in:
Died:	in:
Spouse: Gene Wood	

Name: Pauline Fanny Yarbrough	
Born: 21 May 1919	in: Anna, Collin Co., Texas
Married: 1 January 1947	in:
Died: 22 February 1982	in:
Spouse: Frank Dean Metcalf	

Name: Modell Yarbrough	
Born: 5 July 1921	in: Anna, Collin Co., Texas
Married:	in:
Died: 5 December 1921	in:
Spouse:	



MARRIAGE LICENSE.



STATE OF ARKANSAS.

County of

White

To any Person Authorized by Law to Solemnize Marriage, Greeting:

You are hereby commanded to solemnize the rite and publish the bans of Matrimony between Mr. *D. E. Yarbrough* of *Albion* in the County of *White* and State of *Arkansas* aged *21* years, and Miss *Bertha Gentry* of *Albion* in the County of *White* and State of *Arkansas* aged *17* years, according to law, and do you officially sign and return this License to the parties herein named.

Witness my hand and official seal this
22nd day of *Nov.* 1902.

J. E. Salgo

County Clerk.

D.C.

CERTIFICATE OF MARRIAGE.

CERTIFICATE OF RECORD.

STATE OF ARKANSAS,

County of White } I, J. E. Galdock
Clerk of the County Court of said County, certify that the above License
and Certificate of the Marriage of Mr. D. E. Yarbrough
Miss Gertha Gentry was filed in my office on the
28 day of Nov 1902, and the same is duly recorded on page
63 of Book N of Marriage Records.

WITNESS my hand and the seal of said Court this 28

day of November 1902.

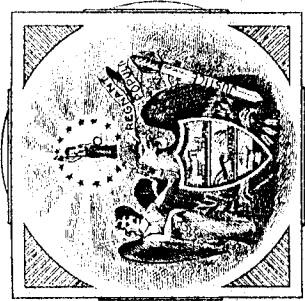
Seal here

J. E. Galdock
Clerk.

By D. E.

MARRIAGE CERTIFICATE

Mr. D. E. Yarbrough
TO
Miss Gertha Gentry



Recorded Book N Page 363

Returned and filed this 28 day of

November 1902

J. E. Galdock
Clerk.

Husband: Desmond Arnold Yarbrough

Born: 8 August 1905 in: Searcy, White Co., Arkansas
Married: 9 November 1928 in:
Died: 26 January 1957 in:
Father: David Edward Yarbrough
Mother: Bertha Dean Gentry
Other Spouses:

Wife: Oleta Irene Smith

Born: 4 April 1912 in: near Hico, Hamilton Co., Texas
Died: in:
Father:
Mother:
Other Spouses:

CHILDREN

Name: Reba Mae Yarbrough
Born: 16 May 1929 in: Rule, Haskell Co., Texas
Married: 8 February 1947 in:
Died: in:
Spouses: Teddy Woodale McAninch, James LeRoy Henderson

Name: Joyce Marie Yarbrough
Born: 1 September 1931 in: Rule, Haskell Co., Texas
Married: 1 October 1950 in:
Died: in:
Spouse: Charles Harrison Williams

Name: Pasty Lavere Yarbrough
Born: 29 March 1933 in: Rule, Haskell Co., Texas
Married: 22 June 1950 in:
Died: in:
Spouses: Leonard O. Lortz, Parvin Leroy Bowden

Name: Shirley Dean Yarbrough
Born: 23 March 1935 in: Rule, Haskell Co., Texas
Married: 16 August 1952 in:
Died: in:
Spouse: Royce Coleman Jr. Oler

Name: Billy Arnold Yarbrough
Born: 20 August 1939 in: Knox City, Knox Co., Texas
Married: 28 December 1965 in:
Died: in:
Spouse: Caralee Watt

Name: Freddie Lee Yarbrough
Born: 20 July 1943
Married: 16 June 1962
Died:
Spouse: Neva Joyce Hillis

Name: Janis Wayne Yarbrough
Born: 12 March 1950
Married:
Died:
Spouse: Phillip Hoblit

Name:
Born:
Married:
Died:
Spouse:



At the Yarbrough Conference
in Columbia, SC 8-4-98
Ormond Y. told me that
Gene Wood died recently

Couple recalls travels under canvas

WOODWAY (AP) — Gene Wood's mother hid him in a paper drawer when Indians approached her family's Indian Territory home around 1908.

That's just one of the adventures Wood has had during his 82 years.

After Wood was born in 1907, his parents moved in a covered wagon from the Texas Panhandle to Indian Territory, Oklahoma. His dad, the late Sam Steven Wood, was deputy sheriff in Stratford.

A few years later, his wife-to-be, then 4 years old, began her covered-wagon adventure, traveling with her family from Kansas to West Texas.

"My daddy was a telegraph operator for the railroad. I guess he just wanted to move to Texas," Mrs. Wood.

Her parents, the late Ed and Ella Gentry Yarbrough, had eight children, including one who died at the age of 6 months.

"We came in two wagons . . . I have no idea how long it took us, I imagine we didn't make more than 20 miles a day," she said. "We crossed the Arkansas River on a ferry; I remember scared Mama was."

The family stopped at far-flung places along the way and asked for laundry. "My sister remembered the people were always glad to see us and always washed. While Mama washed, the brothers would chop wood to do chores for them."

Once settled in Texas, the Yarbroughs built a two-room house in

There was a living room with a bed in it and a sofa that made in-bed, and a kitchen — and a bathroom, too," she said.

Her father died before he could enlarge the little house, leaving her mother to rear seven children

Meanwhile, Gene Wood's family had lived in several Texas towns, always moving in covered wagons.

When his father ran a freight line between Texline and Clayton, N.M., "he got his finger mashed somehow on the freight wagon, and blood poisoning set in," Wood said. "They had to take it off five times before they got through — finally took it off at the shoulder."

When the family later settled in Mart, Wood remembers one special family outing — a trip to Waco to see the Suspension Bridge.

"We rode a wagon. Seems like we stayed in the wagon overnight; they had wagon yards then like they do motels now. You could put your teams up and feed them there."

Despite the loss of his arm, his father's next job was turning standing timber into railroad ties — by hand. The family's next home was Rule, where they farmed cotton.

When he was 21, Wood rode the "Doodlebug" train out of Rule, bought a Model T roadster for \$85 and headed for the state of Washington in search of a job.

Before he left the Northwest, he fought forest fires, pressed clothes for a tailor, surveyed water lines and drilled blast holes to help build Grand Coulee Dam. Later, he panned for gold in Montana, then worked on a Missouri dam.

Wood met Myrtle Yarbrough when he visited his family in Rule in 1940. A week later, he asked her out. "We dated a week, then ran off and got married," Mrs. Wood said with a laugh. "We told my mama before we left. But Gene was afraid to tell his folks."

They headed for Seattle, where Wood earned "\$5,000 a year working in the Seattle shipyards, and



AP Laserphot

Gene and Myrtle Wood both traveled during their early years in covered wagons.

"we thought we were rich," Mrs. Wood said. He worked in a North Dakota mine and the Houston shipyards before they began operating farm machinery

businesses in Rule and Munday. After retiring, they moved to Woodway to be near their two children, Gail Potts and Gary Wood, and their families.

Husband: Odus Columbus Yarbrough

Born: 19 August 1885 in: White Co., Arkansas
Married: 1 July 1903 in: White Co., Arkansas (?)
Died: 12 June 1959 in: Step Rock, White Co., Arkansas
Father: William Thomas Yarbrough
Mother: Frances Ella Smith
Other Spouses:

Wife: Katie Walls

Born: 25 July 1885 in: White Co., Arkansas
Died: 21 July 1966 in: White Co., Arkansas
Father:
Mother:
Other Spouses:

CHILDREN

Name: Myrlie Cordelia Yarbrough
Born: 2 October 1904 in: White Co., Arkansas
Married: 4 January 1947 in:
Died: September in: Searcy White Co., Arkansas
Spouse: A.C. Emde

Name: William Marvin Yarbrough
Born: 7 January 1908 in: White Co., Arkansas
Married: in:
Died: 18 August 1972 in: White Co., Arkansas
Spouse: Rosie Hart

Name: Elma Evalene Yarbrough
Born: 6 December 1910 in: White Co., Arkansas
Married: 14 February in:
Died: in:
Spouse: Isom Byrd

Name: Ruby Susan Yarbrough
Born: 29 October 1913 in: White Co., Arkansas
Married: 22 September 1929 in:
Died: 30 January 1932 in: Step Rock, White Co., Arkansas
Spouse: Alfred Evans

Name: Trulon Oliver Yarbrough
Born: 23 June 1917 in: White Co., Arkansas
Married: 2 June 1934 in:
Died: 22 October 1980 in: Step Rock, White Co., Arkansas
Spouse: Inez Hart

Name: Olon Judon Yarbrough
Born: 21 July 1922 in: White Co., Arkansas
Married: in:
Died: 9 January 1976 in: White Co., Arkansas
Spouse: Adean Blount

Name: Oran Odean Yarbrough
Born: 9 November 1924 in: White Co., Arkansas
Married: in:
Died: in:
Spouse: Inez Blount

Name:
Born: in:
Married: in:
Died: in:
Spouse:

Descendants of Otis Columbus Yarbrough

Generation No. 1

1. OTIS COLUMBUS² YARBROUGH (*W.T.*¹) was born August 19, 1885, and died June 12, 1959 in white co.,. He married KATIE WALLS July 01, 1903, daughter of W.T. WALLS and M.S. MADDEN(MARTHA).

More About OTIS COLUMBUS YARBROUGH:

Fact 1: burried in Philadelphia cemetary

Children of OTIS YARBROUGH and KATIE WALLS are:

- i. MYRLIE CARDELIA³ YARBROUGH, b. October 02, 1904; d. Searcy, Arkansas; m. BUS EMDE, January 04, 1947.
2. ii. WILLIAM MARVIN YARBROUGH, b. January 07, 1908; d. August 18, 1972.
3. iii. ELMA EVOLENE YARBROUGH, b. December 06, 1910.
4. iv. RUBY SUSAN YARBROUGH, b. October 29, 1913, White county Arkansas; d. January 30, 1932, Sreprock, Arkansas.
- v. TRULON OLIVER YARBROUGH, b. June 23, 1917; d. October 22, 1980; m. INEZ HART, June 02, 1934.
5. vi. OLONJUDON YARBROUGH, b. July 21, 1922; d. January 09, 1976.
6. vii. ORAN ODEANE YARBROUGH, b. November 09, 1924.

Generation No. 2

2. WILLIAM MARVIN³ YARBROUGH (*OTIS COLUMBUS*², *W.T.*¹) was born January 07, 1908, and died August 18, 1972. He married ROSIE HART.

Children of WILLIAM YARBROUGH and ROSIE HART are:

- i. JERELL⁴ YARBROUGH.
- ii. SHIRLEY YARBROUGH.
- iii. ELMO YARBROUGH.

3. ELMA EVOLENE³ YARBROUGH (*OTIS COLUMBUS*², *W.T.*¹) was born December 06, 1910. She married ISOM BYRD February 14.

Child of ELMA YARBROUGH and ISOM BYRD is:

- i. CHARLES⁴ BYRD.

4. RUBY SUSAN³ YARBROUGH (*OTIS COLUMBUS*², *W.T.*¹) was born October 29, 1913 in White county Arkansas, and died January 30, 1932 in Sreprock, Arkansas. She married ALFRED EVANS 1929, son of ELBERT EVANS and EMMA WILLIAMS.

Child of RUBY YARBROUGH and ALFRED EVANS is:

7. i. ZELMA DEAN⁴ EVANS, b. September 11, 1930, Speprock, Arkansas.

5. OLONJUDON³ YARBROUGH (*OTIS COLUMBUS*², *W.T.*¹) was born July 21, 1922, and died January 09, 1976. He married ADEAN BLOUNT.

Child of OLONJUDON YARBROUGH and ADEAN BLOUNT is:

- i. FREDDIE⁴ YARBROUGH.

6. ORAN ODEANE³ YARBROUGH (*OTIS COLUMBUS*², *W.T.*¹) was born November 09, 1924. He married INEZ BLOUNT.

Child of ORAN YARBROUGH and INEZ BLOUNT is:

- i. BILLY DEAN⁴ YARBROUGH.

Generation No. 3

7. **ZELMA DEAN⁴ EVANS** (*RUBY SUSAN³ YARBROUGH, OTIS COLUMBUS², W.T.¹*) was born September 11, 1930 in Speprock, Arkansas. She married BRICE DUANE STEWART January 23, 1946 in Augusta Arkansas, son of GUY STEWART and ELMA YINGLING.

Children of ZELMA EVANS and BRICE STEWART are:

8. i. BILLY DENNIS⁵ STEWART, b. December 02, 1946, Searcy, Arkansas.
9. ii. JACKIE DUANE STEWART, b. June 05, 1949, Searcy, Arkansas.
- iii. REGGIE DEAN STEWART, b. March 10, 1951; d. September 1951.
10. iv. **MARIANNE STEWART**, b. July 21, 1959, Searcy, Arkansas.
- v. SUSAN LEANNE STEWART, b. September 10, 1969, Searcy, Arkansas.

Generation No. 4

8. **BILLY DENNIS⁵ STEWART** (*ZELMA DEAN⁴ EVANS, RUBY SUSAN³ YARBROUGH, OTIS COLUMBUS², W.T.¹*) was born December 02, 1946 in Searcy, Arkansas. He married JUNE ELIZABETH REAPER April 02, 1967 in Oak Grove, Arkansas.

Children of BILLY STEWART and JUNE REAPER are:

- i. MARK DENNIS⁶ STEWART, b. June 12, 1970, searcy, Arkansas; d. September 1970, Little Rock, Arkansas.
- ii. ELIZABETH ASHLEY STEWART, b. September 20, 1971, Little Rock, Arkansas; m. BRADY DOTY, November 18, 1995, Little Rock, Arkansas.

9. **JACKIE DUANE⁵ STEWART** (*ZELMA DEAN⁴ EVANS, RUBY SUSAN³ YARBROUGH, OTIS COLUMBUS², W.T.¹*) was born June 05, 1949 in Searcy, Arkansas. He married JANICE ONITA CLEVELAND May 09, 1969 in Providence, Arkansas.

Children of JACKIE STEWART and JANICE CLEVELAND are:

- i. JOHN ALAN⁶ STEWART, b. November 27, 1972.
- ii. JAMES DEAN STEWART, b. August 27, 1975, Searcy, Arkansas; d. June 01, 1996, Little Rock, Arkansas.

10. **MARIANNE⁵ STEWART** (*ZELMA DEAN⁴ EVANS, RUBY SUSAN³ YARBROUGH, OTIS COLUMBUS², W.T.¹*) was born July 21, 1959 in Searcy, Arkansas. She married JAMES DORMAN LESTER JR. November 12, 1977 in Steprock, Arkansas, son of JAMES LESTER and GRETA CROSS.

Children of MARIANNE STEWART and JAMES JR. are:

- i. COURTNEY LYN⁶AE LESTER, b. March 15, 1980.
- ii. JAMES ZACHARY STEWART LESTER, b. June 05, 1983.

husband: William Thomas Yarbrough

Born: 28 August 1857	in: Coffee Landing, Hardin Co., Tennessee
Married: 23 December 1903	in: Princeton Colin Co., Texas
Died: 15 October 1924	in: Rule, Haskell Co., Texas
Father: Levi William Yarbrough	
Mother: Agness C. Yarbrough	
Other Spouses: Frances Ella Smith	

Wife: Annie Wyatt

Born: 15 August 1882	in: White Co., Arkansas
Died: 10 June 1964	in: Rule, Haskell Co., Texas
Father:	
Mother:	
Other Spouses:	

CHILDREN

Name: Johnnie Meek Yarbrough	
Born: 24 September 1904	in: Texas
Married:	in:
Died: 13 October 1937	in:
Spouse:	
Name: Robert Leonard Yarbrough	
Born: 14 December 1905	in: McKinney, Collin Co., Texas
Married: 15 October 1927	in: Rule, Haskell Co., Texas
Died: 20 September 1971	in: Kress, Swisher Co., Texas
Spouse: Nina Jayne Taylor	
Name: Charlie Wesley Yarbrough	
Born: 20 October 1907	in: Texas
Married:	in:
Died: 9 February 1988	in:
Spouse:	
Name: Harvey Eugene Yarbrough	
Born: 18 September 1909	in: Texas
Married:	in:
Died: 26 September 1993	in: Aubrey, Denton Co., Texas
Spouse:	
Name: Elmer Mannie Yarbrough	
Born: 21 April 1912	in: Texas
Married: 11 November 1933	in:
Died: 7 December 1985	in:
Spouse: Queen Isabel Jones	
Name: Velma Pauline Yarbrough	
Born: 4 November 1914	in: Texas
Married: 4 November 1935	in:
Died: 28 February 1988	in: Stamford , Texas
Spouse: Claybourne Jr. Clark	
Name: Thelma Olean Yarbrough	
Born: 4 November 1914	in: Texas
Married: 4 February 1939	in: Lovelock, Nevada
Died:	in:
Spouse: Bob Sturgis	
Name: Mattie Mae Yarbrough	
Born: 15 September 1917	in: Texas
Married: 21 October 1933	in:
Died:	in:
Spouse: Gilmer W. Norris	



GRANDMA ANNIE YARBROUGH AND her 12 children Aug 1935
h to R. ALFRED GABREL, JEWEL MCINTYRE, JOHN M., VELMA CLARKE,
ROBERT L., THELMA STURGIS, CHARLIE, MATTIE NORRIS, HARVEY E.
ELMER M., BENNIE F. & MILTON W.

Husband: William Thomas Yarbrough

Born: 28 August 1857 in: Coffee Landing, Hardin Co., Tennessee
 Married: 23 December 1903 in: Princeton, Colin Co., Texas
 Died: 15 October 1924 in: Rule, Haskell Co., Texas
 Father: Levi William Yarbrough
 Mother: Agness C. Yarbrough
 Other Spouses: Frances Ella Smith

Wife: Annie Wyatt

Born: 15 August 1882 in: White Co., Arkansas
 Died: 10 June 1964 in: Rule, Haskell Co., Texas
 Father: Robert Matthew Wyatt
 Mother: Martlia Jane Haywood
 Other Spouses:

CHILDREN

Name: Johnnie Meek Yarbrough
 Born: 24 September 1904 in: Texas
 Married: in:
 Died: 13 October 1937 in:
 Spouse:

Name: Robert Leonard Yarbrough
 Born: 14 December 1905 in: McKinney, Collin Co., Texas
 Married: 15 October 1927 in: Rule, Haskell Co., Texas
 Died: 20 September 1971 in: Kress, Swisher Co., Texas
 Spouse: Nina Jayne Taylor

Name: Charlie Wesley Yarbrough
 Born: 20 October 1907 in: Texas
 Married: in:
 Died: 9 February 1988 in:
 Spouse:

Name: Harvey Eugene Yarbrough
 Born: 18 September 1909 in: Texas
 Married: in:
 Died: 26 September 1993 in: Aubrey, Denton Co., Texas
 Spouse:

Name: Elmer Mannie Yarbrough
 Born: 21 April 1912 in: Texas
 Married: 11 November 1933 in:
 Died: 7 December 1985 in:
 Spouse: Queen Isabel Jones

Name: Velma Pauline Yarbrough
 Born: 4 November 1914 in: Texas
 Married: 4 November 1935 in:
 Died: 28 February 1988 in: Stamford, Texas
 Spouse: Claybourne Jr. Clark

Name: Thelma Olean Yarbrough
 Born: 4 November 1914 in: Texas
 Married: 4 February 1939 in: Lovelock, Nevada
 Died: in:
 Spouse: Bob Sturgis

Name: Mattie Mae Yarbrough
 Born: 15 September 1917 in: Texas
 Married: 21 October 1933 in:
 Died: in:
 Spouse: Gilmer W. Norris

Name: Bennie Franklin Yarbrough
Born: 26 May 1919 in: Texas
Married: 30 November 1943 in: Fresno, California
Died: in:
Spouse: Hazel B. Davis

Name: Milton Wyatt Yarbrough
Born: 25 February 1922 in: Texas
Married: in:
Died: in:
Spouse:

Name:
Born: in:
Married: in:
Died: in:
Spouse:

Name:
Born: in:
Married: in:
Died: in:
Spouse:

Name:
Born: in:
Married: in:
Died: in:
Spouse:

Name:
Born: in:
Married: in:
Died: in:
Spouse:

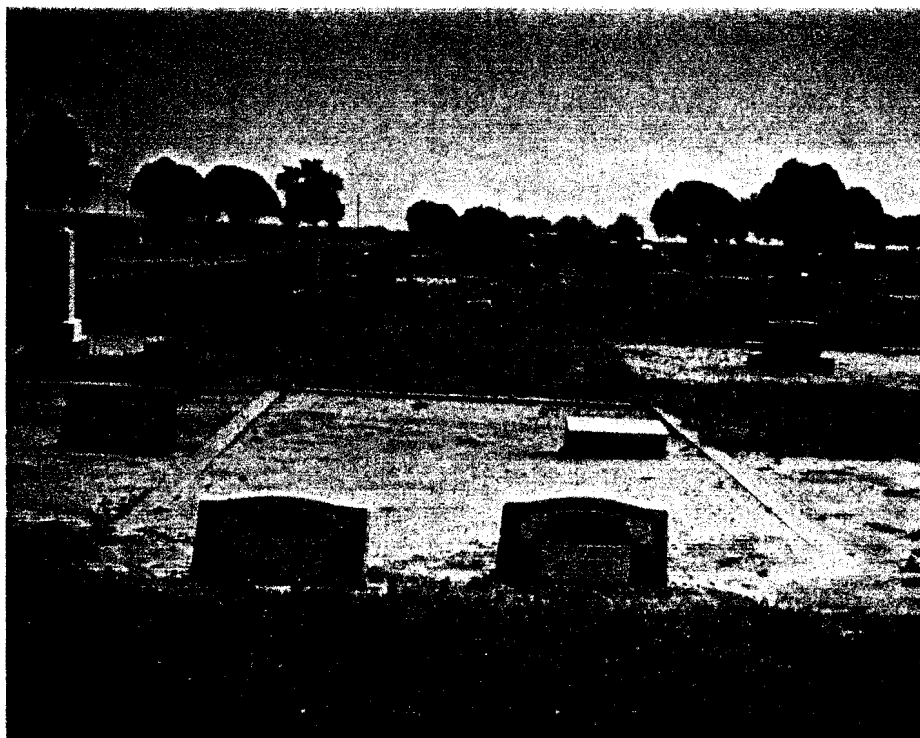
Name:
Born: in:
Married: in:
Died: in:
Spouse:

Name:
Born:
Married:
Died:
Spouse:

Name:
Born:
Married:
Died:
Spouse:

Name:
Born:
Married:
Died:
Spouse:

Name:
Born:
Married:
Died:
Spouse:



ANNIE WELLS WYATT (GABREL)

Born August 15, 1882
(Died June 10, 1964
Buried at Rule, Texas)

WILLIAM THOMAS YARBROUGH

Born August 28, 1857
in ~~Mississippi~~ TENN 4
(Died October 15, 1925
Buried at Rule, Texas)

Married December 23, 1903
Princeton, Texas

Ten Children Born to this Union
(Two deceased, eight living)

Johnnie Meek Yarbrough	Born September 24, 1904 (Died October 13, 1937)	
Robert Leonard Yarbrough	Born December 14, 1905 (Died September 20, 1971)	
Charlie Wesley Yarbrough 1515 Estes Avenue Corcoran, California 73213	Born October 20, 1907	Died Feb. 9, 1988
Harvey Eugene Yarbrough Route 3, Box 482 Aubrey, Texas 76227	Born September 18, 1909	
Elmer Mannie Yarbrough 481 Mount View #14 Granbury, Texas 76048	Born April 21, 1912	Died Dec. 1, 1985
Velma Pauline Yarbrough Clarke 1033 Reynolds Stamford, Texas 79553	Born November 4, 1914	Died Feb 28, 1988
Thelma Olean Yarbrough Sturges P. O. Box 647 Lovelock, Nevada 89419	Born November 4, 1914	
Mattie Mae Yarbrough Norris 224 Las Vegas Trail North Fort Worth, Texas 76108	Born September 15, 1917	
Bennie Franklin Yarbrough 3826 North Polk Avenue Fresno, California 93705	Born May 26, 1919	
Milton Wyatt Yarbrough 1250 Downing Street Imperial Beach, California 92032	Born February 25, 1922	

ANNIE WELLS WYATT

Born August 15, 1882
White County, Arkansas

ALBERT MILTON GABREL

Born February 8, 1875
Tabbets County, Mississippi
(Died August 18, 1900 in
Lonoke, Arkansas;
Buried at Cabot, Arkansas

Married July 13, 1897
Lonoke County, Arkansas
By Reverend Jim Coe

Two Children

ALFRED CALVERY GABREL
Born May 4, 1898
Lonoke County, Arkansas
(Died January 4, 1979
Buried at Odessa, Texas)

Married

Lela Ann Henry
on October 4, 1919
at Haskell, Texas

7 children

MINNIE JEWEL GABREL
Born December 20, 1900
White County, Arkansas
(Died November 6, 1971
Buried at Denison, Texas)

Married

Earl McIntyre
on August 21, 1915
at Haskell Co, Texas

*Died 1963
Buried Denison Tex*

2 children

*(1 died young)
son*

*Last
address*

Daughter

Lillie Scofield

Denison, Tex

last address

Lela Gabrel

01 Hillcrest Ave.

Odessa Tex

79760

ANNIE WELLS WYATT

Born August 15, 1882
White County, Arkansas

ALBERT MILTON GABREL

Born February 8, 1875
Tabbets County, Mississippi
(Died August 18, 1900 in
Lonoke, Arkansas;
Buried at Cabot, Arkansas

Married July 13, 1897
Lonoke County, Arkansas
By Reverend Jim Coe

Two Children

ALFRED CALVERY GABREL
Born May 4, 1898
Lonoke County, Arkansas
(Died January 4, 1979
Buried at Odessa, Texas)

Married

Lela Ann Henry
on October 4, 1919
at Haskell, Texas

7 children

MINNIE JEWEL GABREL
Born December 20, 1900
White County, Arkansas
(Died November 6, 1971
Buried at Denison, Texas)

Married

Earl McIntyre
on August 21, 1915
at Haskell Co, Texas

*Died 1963
Buried Denison Tex*

*2 children
(1 died young)
son*

*Last
address*

Daughter

*Lillie Scofield
Denison, Tex*

at address

Lela Gabrel

21 Hillcrest Ave.

Odessa Tex

79760

MATTIE MAY YARBROUGH

Husband, Gilmer W. Norris

They live on Las Vegas Trail,
Ft Worth, Tx

Phone (817) 248-3175

aka:	
Born:	May 19, 1912
in:	
Source:	
Died:	April 07, 1949
in:	Kingman, Mohave County, Arizona
Source:	
Relationship with Father:	Natural
Relationship with Mother:	Natural
Reference number:	

Address and Phone(s)

al

was a carpenter by trade and worked for the J. G. Boswell Company in Corcoran, California at the time of his death. The following is
nt of a newspaper article dated April 8, 1949:

ORAN MAN KILLED BY HITCHHIKER IN ARIZONA -

Yarbrough is Victim of Young Gunman -

Sweep Desert; Fugitive May Have Escaped On Train -

coran man was shot to death by a hitch-hiking killer near Kingman, Arizona yesterday and sheriff's posses, aided by airplanes, were
g the hunt for the fugitive today. Shot and killed last night as he swerved his car into a Kingman filling station was Glenn Yarbrough,
employee of the J.G. Boswell Co., Corcoran. Sheriff Frank L. Porter of Mohave County said the man apparently was trying to thwart
up attempt. Hopes for a quick capture dimmed as the trail grew cold and the sheriff said the slayer of the motorist may have
sfully hopped an eastbound freight train. He had smashed his getaway car.

caliber revolver which the sheriff identified as the murder weapon was found in mud near the tracks. The man sought was described as
25 years old, five feet 10 inches tall, weighing about 135 pounds. He has light brown hair, a fair complexion and a long slender face.
s dressed in light tan trousers, light green shirt and a tan colored sport jacket. Deputies picked up a trail which indicated the man had
unning toward the track of the Santa Fe Railway Company. It ended at a point on a long upgrade where trains usually proceed at a
eed, the sheriff said.

alking with the victim's mother in Rule, Texas, the sheriff theorized the killer had hitch-hiked a ride with the motorist. The mother said
y had left Rule alone Wednesday morning on his way home to California. Service station attendants at the Gypsy Auto Court here
Yarbrough was shot twice as he attempted to leave his car. The killer then sped away in the automobile. One mile east of Kingman on
ghway 66 the car hit another driven by Fred Roe of Kingman. Both vehicles were disabled. After talking briefly with a passing
the suspected killer left on foot across the desert. The couple, Mr. and Mrs. Vic Bertelli of Kingman, furnished the sheriff's office
description and said the man apparently was between 20 and 25 years of age.

Yarbrough had been employed by the Boswell Company as a carpenter since 1946. He was unmarried. Officials at the company said
had taken the trip back to Texas during the slack season at the big cotton and grain farming company in the Tulare Lake basin.
ugh was a nephew of R. L. Yarbrough, Tulare rancher, and an uncle Buster Yarbrough, football and baseball star at Visalia College

Marriage Information**Age Notes**

Child: Myrtle Augusta Yarbrough

**Husband: Robert Leonard Yarbrough**

Born: December 14, 1905 in: McKinney, Collin County, Texas
 Married: October 15, 1927 in: Rule, Haskell County, Texas
 Died: September 20, 1971 in: Kress, Swisher County, Texas
 Father: William Thomas Yarbrough
 Mother: Annie Wells Wyatt
 Other Spouses:

**Wife: Nina Jayne Taylor**

Born: April 28, 1910 in: Old Glory, Stonewall County, Texas
 Died: June 17, 1976 in: Plainview, Hale County, Texas
 Father: William Sloane Taylor
 Mother: Bethenia Carolyn Berry
 Other Spouses:

**CHILDREN**

Name: Dorthy Faye Yarbrough
 Born: September 17, 1928 in: Rule, Haskell County, Texas
 Married: April 25, 1948 in: Tulare, Tulare County, California
 Died: in:
 Spouses: A.D. Jr. Compton, William Simpson



Name: William Forrest Yarbrough
 Born: November 18, 1930 in: Marlow, Oklahoma
 Married: June 10, 1951 in: Tulare, California
 Died: in:
 Spouse: Nina Mae Anderson



Name: Annie Caroline Yarbrough
 Born: March 01, 1933 in: Eagle Point, Oregon
 Married: in:
 Died: April 07, 1934 in: Corcoran, California
 Spouse:

Prepared By:
 Annie Lee Yarbrough
 Serrente Plaza
 La Linda, Ca 92686

Phone(s): (714) 777-2933 Fax: (714) 777-2933 E-Mail: yarbroub95@aol.com



band: Harvey Eugene Yarbrough

Born: September 18, 1909 in: Texas
rried: 1950 in:
Died: September 26, 1993 in: Aubrey, Denton County, Texas
ather: William Thomas Yarbrough
other: Annie Wells Wyatt
Other Spouses: Bessie Thomson



Wife: 2nd Wife of Harvey Eugene Yarbrough Inez

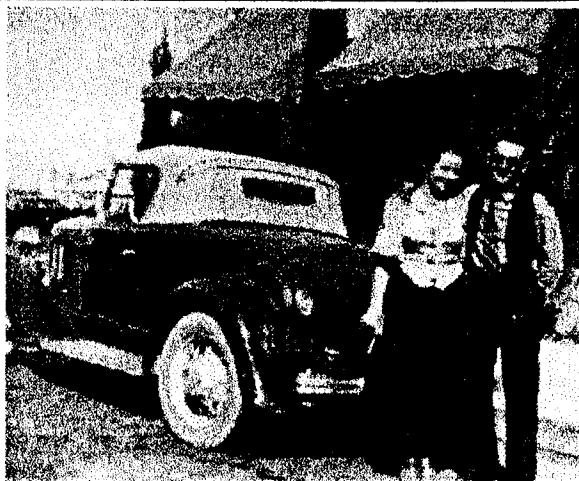
Born: in:
Died: in:
ather:
other:
Other Spouses:



By:
ee Yarbrough
rente Plaza
nda, Ca 92686

Phone(





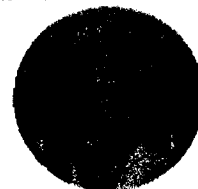
Husband: Elmer Mannie Yarbrough

Born: April 21, 1912 in: Texas
 Married: November 11, 1933 in:
 Died: December 07, 1985 in:
 Father: William Thomas Yarbrough
 Mother: Annie Wells Wyatt
 Other Spouses:



Wife: Queen Isabel Jones

Born: in:
 Died: in:
 Father:
 Mother:
 Other Spouses:



CHILDREN

Name: JoAnne Yarbrough
 Born: Abt 1944 in:
 Married: in:
 Died: in:
 Spouses: Bob Calciano, Husband of JoAnne Yarbrough Jim



Prepared By:
 AnnieLee Yarbrough
 10 Serrente Plaza
 Santa Linda, Ca 92686

Phone(s): (714) 777-2933 Fax: (714) 777-2933 E-Mail: yarbroub95@aol.com



Husband: Claybourne Jr. Clarke

Born: in:
 Married: November 04, 1935 in:
 Died: Abt 1983 in: Stamford, Texas
 Father:
 Mother:
 Other Spouses:



Wife: Velma Pauline Yarbrough

Born: November 04, 1914 in: Texas
 Died: Abt 1988 in: Stamford, Texas
 Father: William Thomas Yarbrough
 Mother: Annie Wells Wyatt
 Other Spouses:



CHILDREN

Name: Claybourne Clarke III
 Born: Abt 1945 in:
 Married: in:
 Died: in:
 Spouse:

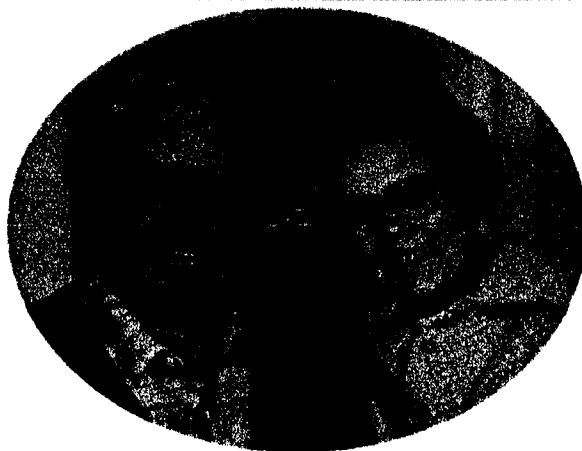


Name: Ann Clarke
 Born: Abt 1947 in:
 Married: in:
 Died: in:
 Spouse: Husband of Ann Clarke Price



red By:
 ieLee Yarbrough
 Serrente Plaza
 a Linda, Ca 92686

Phone(s): (714) 777-2933 Fax: (714) 777-2933 E-Mail: yarbroub95@aol.com

**Husband: Bob Sturgis**

Born: in:
Married: February 04, 1939 in: Lovelock, Nevada
Died: in:
Father:
Mother:

Other Spouses:

Wife: Thelma Olean Yarbrough

Born: November 04, 1914 in: Texas
Died: in:
Father: William Thomas Yarbrough
Mother: Annie Wells Wyatt
Other Spouses: Leon Carr

**CHILDREN**

Name: Bobbie Sturgis
Born: in:
Married: in:
Died: in:
Spouse: John Aufermaur

Name: Charles Sturgis
Born: in:
Married: in:
Died: in:
Spouse:

ared By:
nieLee Yarbrough
0 Serrente Plaza
ba Linda, Ca 92686

Phone(s): (714) 777-2933 Fax: (714) 777-2933 E-Mail: yarbroub95@aol.com

Husband: Gilmer W. Norris

Born: January 06, 1913 in:
 Married: October 21, 1933 in:
 Died: in:
 Father:
 Mother:

Other Spouses:

Wife: Mattie May (Martha Agness) Yarbrough

Born: September 15, 1917 in: Texas
 Died: in:
 Father: William Thomas Yarbrough
 Mother: Annie Wells Wyatt
 Other Spouses:



CHILDREN

Name: Mary June Norris
 Born: June 27, 1936 in:
 Married: January 13, 1956 in: Fort Worth, Texas
 Died: in:
 Spouse: Gwen Marvin Brodie

Name: Gilmer LeRoy Norris
 Born: October 13, 1941 in:
 Married: October 23, 1964 in: Fort Worth, Texas
 Died: in:
 Spouse: Judy Warren

Name: Nancy Joyce Norris
 Born: February 16, 1945 in:
 Married: 1964 in:
 Died: in:
 Spouse: Gene Bell

Prepared By:
 AnnieLee Yarbrough
 30 Serrente Plaza
 Santa Barbara, Ca 92686

Phone(s): (714) 777-2933 Fax: (714) 777-2933 E-Mail: yarbroub95@aol.com

Husband: Bennie Franklin Yarbrough

Born: May 26, 1919 in: Texas
 Married: November 30, 1943 in: Fresno, California
 Died: in:
 Father: William Thomas Yarbrough
 Mother: Annie Wells Wyatt
 Other Spouses:



Wife: Hazel B. Davis

Born: December 09, 1919 in: Byers, Texas
 Died: in:
 Father:
 Mother:
 Other Spouses:

CHILDREN

Name: Thomas William Yarbrough
 Born: October 14, 1949 in: Fresno, California
 Married: January 22, 1972 in: Fresno, California
 Died: in:
 Spouse: Mary Lou Shuman

Name: Linda Sue Yarbrough
 Born: May 21, 1953 in: Merced, California
 Married: in:
 Died: in:
 Spouse: Scott Riba

Name: Mark Andrew Yarbrough
 Born: January 17, 1958 in: Merced, California
 Married: May 31, 1980 in: Yosemite Valley, California
 Died: in:
 Spouse: Sandy Scharf

pared By:
 nieLee Yarbrough
 O Serrente Plaza
 ba Linda, Ca 92686

Phone(s): (714) 777-2933 Fax: (714) 777-2933 E-Mail: yarbroub95@aol.com

Husband: Milton Wyatt Yarbrough

Born: May 25, 1922 in: Texas
Married: 1950 in:
Died: in:
Father: William Thomas Yarbrough
Mother: Annie Wells Wyatt
Other Spouses: Bettie Guadilana

**Wife: Wife of Milton Wyatt Yarbrough Ruth**

Born: in:
Died: in:
Father:
Mother:
Other Spouses:

CHILDREN

Name: Philip Yarbrough
Born: Abt 1950 in:
Married: in:
Died: in:
Spouse:

Name: David Yarbrough
Born: Abt 1953 in:
Married: in:
Died: in:
Spouse:

Name: Kim Yarbrough
Born: Abt 1954 in:
Married: in:
Died: in:
Spouse:

pared By:

AnieLee Yarbrough
0 Serrente Plaza
ba Linda, Ca 92686

Phone(s): (714) 777-2933 Fax: (714) 777-2933 E-Mail: yarbroub95@aol.com

Ancestors of Levi William Yarbrough

Edmund Yarbrough

b: Abt 1762 in Anson, North Carolina

m: 5 December 1789 in Davidson, North Carolina

d: Abt 1850 in Decaturville, Decatur Co., Tennessee

Aquilla Yarbrough

b: Abt 1788 in Anson, North Carolina

Sophia Goswick (Gossett?)

b: Abt 1766 in Baltimore, Maryland

d: 7 August 1841 in Decaturville, Decatur Co., Ten

Levi William Yarbrough

b: 19 February 1834 in Humphreys Co., Tennessee

m: 7 May 1855 in Tennessee

d: Bef. 1910 in White Co., Arkansas

Winny

ess C. Yarbrough

November 1834 in Tennessee

May 1855 in Tennessee

August 1871 in White Co., Arkansas

usband: Levi William Yarbrough

Born: 19 February 1834 in: Humphreys Co., Tennessee
Married: 7 May 1855 in: Tennessee
Died: Bef. 1910 in: White Co., Arkansas
Father: Aquilla Yarbrough
Mother: Winny
Other Spouses:

Wife: Agness C. Yarbrough

Born: 9 November 1834 in: Tennessee
Died: 23 August 1871 in: White Co., Arkansas
Father:
Mother:
Other Spouses:

CHILDREN

Name: William Thomas Yarbrough
Born: 28 August 1857 in: Coffee Landing, Hardin Co., Tennessee
Married: 4 April 1875 in: White Co., Arkansas
Died: 15 October 1924 in: Rule, Haskell Co., Texas
Spouses: Frances Ella Smith, Annie Wyatt

Name: Antonet Agness Yarbrough
Born: 6 November 1858 in: Coffee Landing Hardin Co., Tennessee
Married: in:
Died: in:
Spouse:

Name: Harriett Annabell Yarbrough
Born: 22 March 1860 in: Coffee Landing Hardin Co., Tennessee
Married: in:
Died: in: died as a child
Spouse:

Name: John B. Yarbrough
Born: 2 September 1861 in: Coffee Landing Hardin Co., Tennessee
Married: in:
Died: in:
Spouse:

Name: James H. Yarbrough
Born: 7 March 1863 in: Coffee Landing Hardin Co., Tennessee
Married: in:
Died: in:
Spouse:

Name: Alice J. Yarbrough
Born: 7 January 1865 in: Coffee Landing Hardin Co., Tennessee
Married: in:
Died: in: died as a child
Spouse:

Name: Levi Franklin Yarbrough
Born: 17 March 1866 in: Harden Co., Tennessee
Married: 27 August 1889 in: White Co., Arkansas
Died: 16 November 1930 in: White Co., Arkansas
Spouse: Margaret Amentia Gillreath

Name: Mary Elizabeth Yarbrough
Born: 4 December 1867 in: Harden Co., Tennessee
Married: in:
Died: in:
Spouse:

Name: Joshua Yarbrough
Born: 4 April 1871 in: White Co., Arkansas
Married: in:
Died: in:
Spouse:

Name:
Born: in:
Married: in:
Died: in:
Spouse:

Name:
Born: in:
Married: in:
Died: in:
Spouse:

Name:
Born: in:
Married: in:
Died: in:
Spouse:

Name:
Born: in:
Married: in:
Died: in:
Spouse:

Name:
Born: in:
Married: in:
Died: in:
Spouse:

Name:
Born: in:
Married: in:
Died: in:
Spouse:

Name:
Born: in:
Married: in:
Died: in:



SCHEDULE 1.—Free Inhabitants in 12 Serial District
of Lanang enumerated by me, on the 17
Post Office Coffa Landang.

Dwelling-house numbered in the order of visitation.	Families numbered in the order of visitation.	The name of every person whose usual place of abode on the first day of June, 1900, was in this family.	Description.			Profession, Occupation, or Trade of each person, male and female 15 years of age.
			Age.	Sex.	Color, if black, or marriage.	
1	2	3	4	5	6	7
1		Lucinda J	7	St		
2	1254 1299	L. W. Garbrough	24	M		Corn La Co
3		Agnese C	29	St		
4	→	Wm H	2	M		
5		Antenut A	1	St		
6		Marriett A	7	St		
7	1255 1300	John Capland	29	M		Harmer
8	1256 1301	W. H. Gibbs	27	M		Harmer
9		Elizabeth J	29	St		
10		Biga B	17	M		
11		Thomas M	12	M		
12		Martha J	11	St		
13		Isiah W	7	M		
14		Mary J	4	St		
15		John H	2	M		
16	1257 1302	J. S. Matthews	25	M		Harmer
17		Lily J	24	St		
18		Thomas H	4	M		
19		Elizabeth A	2	St		

in the County of Hearshorn State
 of Sept 1900. Re J. W. Kinson Asst Marshal.

VALUE OF ESTATE OWNED.			Place of Birth, Naming the State, Territory, or Country.	Married within the year.	Attended School within the year.	Whether deaf and dumb, blind, insane, idiotic, pauper, or convict.	
Value of Real Estate.	Value of Personal Estate.						
8	9	10		11	12	13	14
		"	"				
	100	Penn	"				
		"	"				
		"	"				
		"	"				
		"	"				
		"	"				
	200	Penn	"				
600	932	Virginia	"				
		Penn	"				
		"	"				
		"	"				
		"	"				
		"	"				
		"	"				
		"	"				
	173	Ala	"				
		Penn	"				
		"	"				
		"	"				

SCHEDULE 1.—Inhabitants in

of Letcher Texasenumerated by me on the 25th daPost Office: Callwell

1	2	3	Description.			7	8
			4	5	6		
The name of every person whose place of abode on the first day of June, 1870, was in this family.			Age at last birth-day, if under 1 year, give months by fractions, show 7 th	Sex—Male (M), Female (F)	Color—White (W), Negrot (N), Mulatto (M), Other (O), Indian (I)	Profession, Occupation, or Trade of each person, male or female.	Value of Real Estate owned
1	2	3	4	5	6	7	8
1							
2							
3		William J	1	m	w		
4		Martha	63	f	w		
5		McDuffy Sarah	12	f	w		
6	49	49	49	49	49	49	49
7		John W.	39	m	w	Farmer	
8		Agnes G	39	f	w	Keeping house	
9		William D	14	m	w		
10		John B.	8	m	w		
11		Allen J	5	f	w		
12		Livie D	4	m	w		
13		Mary E	2	f	w		
14	50	50	50	50	50	50	50
15		William W. J. F	28	m	w	Farmer	
16		Mary L	24	f	w	Keeping house	
17		Martha C	4	f	w		
18		Jack D	2	m	w		
19	51	51	51	51	51	51	51
20		John W.	55	m	w	Farmer	500
21		Louisa G	40	f	w	Keeping house	
22		Reuben B	21	m	w	Farmer	
23		Arthur J	18	m	w		

to answer. Inquiries numbered 11, 12, 15, 16, 17, 19, and 20 are to be answered by an affirmative mark, as follows:

Life, in the County of White, State
of June, 1870.

389

Michael T. Hall, A. S. Marshal.

STATE	Place of Birth, naming State or Territory of U. S.; or the Country, if of foreign birth.	PARENTAGE		If born within the year, state month (Jan., Feb., &c.)	If married within the year, state month (Jan., Feb., &c.)	If attended school within the year	EDUCATIONAL		Whether deaf and dumb, blind, insane, or idiotic.	CONSTITUTIONAL QUALIFICATIONS	
		Father of foreign birth.	Mother of foreign birth.				Can read	Can write		Male Citizens of U. S. 21 years of age and up.	Male Citizens of U. S. 18 years of age and up, who are not disqualified on account of insanity, idiotism, or other grounds, and who are not under legal disability.
1	10	11	12	13	14	15	16	17	18	19	20
	Arkansas										
	Tennessee										
	Arkansas							1	-		
10	Tennessee							1		1	
	Tennessee							1			
	" "					1					
	" "					1					
	" "										
	" "										
	" "										
10	Tennessee									1	
	Arkansas										
	" "										
	" "										
10	Tennessee									1	
	" "							1			
	" "					1				1	
	" "					1					
	" "					1					

Rebecca J. 10, Franklin P. S. H-224-260
 *YARBROUGH, William 18, L-132-43
 YARBROUGH, William 76, Nancy 33, L-132-43
 *YARBROUGH, Wm. J. J. 25, W-95-229
 *YARBROUGH, Martin 23, W-311-459
 YARBY, Elizabeth 28, H-54-359
 YARBY, William 65, Martha 42, Albert 14, Lucinda
 11, Allen 8, Wilson 4, Aaron 3, Caswell 1,
 S-36-395
 YARDLEY, Harbet 24, Lusindy 19, Henry 8/12, K-215-
 135
 YARDELY, W. C. 23 (m), Margret 19, Robert 2, Ru-
 76-98
 YARDLY, E. 40 (f), J. B. 21 (m), M. S. 17 (f), M.
 J. 8 (f), Ru-114-131
 YARDLY, Richard 60, Nancy 30, Samuel 22, K-215-136
 *YARDLY, S. A. 70 (f), Ru-100-130
 YARDLY, T. 37 (m), Martha 44, M. J. 11 (f), Dover?
 S (m), Tom 5, Ru-116-136
 YARINGTON, G. W. 35 (m), Sarah 23, J. B. 3 (m),
 G. M. 1 (m), Hy-59-329
 *YARLING, John 24, Jennie 2, Henry 2, Nancy 48,
 Sh-41-108
 *YARNEL, James 32, W-92-119
 YARNELL, Daniel 59, Eliza 62, Milton T. 20, Sam-
 uel HERRINGTON 6, A-67
 YARNELL, Daniel 33, W. B. 29 (f), James M. 1, Mary
 64, H-46-39
 YARNELL, J. L. 55 (m), Jane 43, Elizabeth 11, Henry
 6, Isaac McCANNACK 18, H-16-89
 YARNELL, James 55, Nancy 52, Albert W. 23, Aaron
 15, John 12, Hy-90-431
 YARNELL, Joel 73, Nancy 51, Elizabeth 36, Robert
 M. 14, A-1
 YARNELL, Joseph 43, Sarah 40, John 15, Eliza C.
 12, Joseph 9, James 8, Sarah 3, Josephine 2,
 Thos. D. CONNER 28, Thos. MAJORS 22, H-158-49
 YARNELL, Lewis 46, Catharine 44, Sarah 20, Margaret
 17, Evaline 15, Thomas 13, Rebecca 11, Mary
 8, Joseph 4, H-151-46
 YARNELL, Martin W. 48, Harriet J. 47, Francis M.
 23, James S. 21, Harrison J. 18, Wm. A. 15,
 Maryant E. 13, Stephen H. 19, K-52-187
 YARNELL, Richard 32, Rachel 28, James D. 6, Samuel
 V. 4, Richard 1, A-80
 YARNELL, Samuel 30, Lucy A. 26, Martha J. 4, Mary
 A. 1, A-80
 YARNELL, Thomas 38, Adaline 33, David C. 16, James
 T. 5, No name 3/12 (m), Margaret P. SHELTON
 9, A-89
 YARNELL, Thomas 56, Hannah 56, James M. 23, Jane
 A. 19, Mary A. 17, Armina HENDRIX 34, Sarah
 12, Mary 9, Wm. G. 7, Jordan NORMAN 15, Joseph
 13, K-18-327
 YARNELL, Thomas J. 28, Sarah E. 23, Angelina C. 5,
 Rebecca M. 3, Hannah M. 1, Sarah C. JONES 9,
 K-82-327
 YARNOLD, Sarah 62, Wiley ALDER 22, Mr-22-236
 YARRINGTON, W. F. 48 (m), E. J. 34 (f), Winfield
 12, Clinton 9, Augusta 7, W. W. 5 (m), Theo.
 1, Mt-74-390
 YARWOOD, John 26, Martha 21, Mr-149-294
 *YATEN, James 23, S-55-306
 YATES, A. C. 36 (m), Easter 35, John 5, Eliza 4,
 Martha 1, Thomas 2, P-64-395
 YATES, Absalom 70, Catharine 53, Elizabeth 37,
 Eliza 27, Thomas 22, Elijah 14, Sidney 12,
 Sarah 9, W-107-49
 YATES, Alexander 25, Lemira M. 22, Amaranda 1,
 Philander 1, W-46-18
 YATES, Alfred 21, Elizabeth 22, Marsellus 2, Wil-
 liam 5/12, W-43-18
 YATES, Anderson 40, Elizabeth 36, James J. 17,
 Thomas B. 16, Robert W. 15, William H. 13,
 Martha D. 7 11, Elizabeth J. 9, Luther A. 8,
 Rachel C. 1, Gr-24-480
 *YATES, Anna 35, Sh-24-73
 YATES, B. L. 22 (m), Savannah S. 16, H-179-420
 YATES, Barbara 35, George H. 17, Sallie 13, Samuel
 11, Webster 8, Mary 8, John 6, William JONES
 36, William Jr. 6, Cr-54
 YATES, C. D. 43 (m), Nancy A. 31, Martha J. 4,
 Mary A. 3, John T. 1, John P. HARRIS 14, Di-
 96-249
 *YATES, C. N. Wad 20 (m), G-409-389
 YATES, Catharine 42, Mary 19, Berilinda 16, Sarah
 24, Newman 3, Franklin 2, S-74-399

band: Aquilla Yarbrough

Born: Abt 1788 in: Anson, North Carolina
Married: in:
Died: in:
Father: Edmund Yarbrough
Mother: Sophia Gossett
Other Spouses:

Wife: Winny

Born: in:
Died: in:
Father:
Mother:
Other Spouses:

CHILDREN

Name: ~~Levi~~ William Yarbrough
Born: 19 February 1834 in: Humphreys Co., Tennessee
Married: 7 May 1855 in: Tennessee
Died: in: White Co., Arkansas
Spouse: Agness C. Yarbrough

Name: James Thomas Yarbrough
Born: 8 MAR 1815 in:
Married: in:
Died: in:
Spouse:

Name:
Born: in:
Married: in:
Died: in:
Spouse:

Name:
Born: in:
Married: in:
Died: in:
Spouse:

Name:
Born:
Married:
Died:
Spouse:

Name:
Born:
Married:
Died:
Spouse:

Name:
Born:
Married:
Died:
Spouse:

Name:
Born:
Married:
Died:
Spouse:

This information was given
to me (Lecil Brown) by Loeta
Yarbrough Venable. She is
descendant of JAMES T. Y. who
was brother to my ancestor
LEVI WM. Y. Other children
of AQUILLA & WINNY, and order
of birth not known.



Rebecca July 1875

AQUILLA

AND: GOSSETT, SOPHIA

: YARBROUGH, EDMUND

NAME: YARBROUGH, JOHN H. SPOUSE:
 BORN: ABT 1801 PLACE: , MECKLENBURG, NC
 CHR.: PLACE:
 MARR: PLACE:
 DIED: PLACE:

CHILDREN:

1. Aquila
b. 1788
2. Henry
b. 1790, Franklin County, North Carolina
d. 23 Oct. 1866, Franklin County, North Carolina
m. Delilah Crawley
3. James
b. 1792
m. Richardson
- *4. William
b. 1794, North Carolina
d. ca 1868, Decatur County, Tennessee
m. (1) Mary
(2) Judy Russell
5. Nancy
b. 1796
m. Sylvanus Fisher
6. Joseph
b. 1799
d. 1841
7. John H.
b. 1801
d. 1865
m. Molly L.

Sources of Information: Nelle Morris Jenkins Yarbrough Quarterly, Vol. II, p.88 which quoted material from Sen. G. W. Yarbrough, Wedowee, Ala.; Census Records, 1850, Decatur County, Tennessee, will of William Yarbrough, 1868, Probate, Vol. 1, p. 8-13, in Decatur County, Tennessee; letters from Sen. George W. Yarbrough, Wedowee, Ala.

Compiled 20 Jan. 1967

Compiler: Dorothy Bearden Heaner (Mrs. R. R.)

3 June 1982

*Ancestor of DBH

Senator Yarbrough suggests that "Edmund's father was William Yarbrough, a grandson of William Yarbrough of Amelia Co., Va. The Yarbroughs of N.C. prior to 1750 came to N.C. from Amelia Co., Va. The 1st Yarbrough in America (Richard Christian, Va., 1643) moved to Amelia shortly before his death in 1702. Two of his sons, John and Richard, Jr. raised large families in Amelia Co., Va., in the Nottaway River-Reedy Creek Area." Letter to DBH, 24 Jan. 1967.
 I have hoped to do more research on this line and still hope to. DBH

From Automated Archives
 CD # 100
 Automated Family Pedigrees
 # 1 - 1995

Year	Month	Day	Time	Place	Remarks
1907	Jan	1	10:00	St. Paul	Left for St. Paul
1907	Jan	2	10:00	St. Paul	Left for St. Paul
1907	Jan	3	10:00	St. Paul	Left for St. Paul
1907	Jan	4	10:00	St. Paul	Left for St. Paul
1907	Jan	5	10:00	St. Paul	Left for St. Paul
1907	Jan	6	10:00	St. Paul	Left for St. Paul
1907	Jan	7	10:00	St. Paul	Left for St. Paul
1907	Jan	8	10:00	St. Paul	Left for St. Paul
1907	Jan	9	10:00	St. Paul	Left for St. Paul
1907	Jan	10	10:00	St. Paul	Left for St. Paul
1907	Jan	11	10:00	St. Paul	Left for St. Paul
1907	Jan	12	10:00	St. Paul	Left for St. Paul
1907	Jan	13	10:00	St. Paul	Left for St. Paul
1907	Jan	14	10:00	St. Paul	Left for St. Paul
1907	Jan	15	10:00	St. Paul	Left for St. Paul
1907	Jan	16	10:00	St. Paul	Left for St. Paul
1907	Jan	17	10:00	St. Paul	Left for St. Paul
1907	Jan	18	10:00	St. Paul	Left for St. Paul
1907	Jan	19	10:00	St. Paul	Left for St. Paul
1907	Jan	20	10:00	St. Paul	Left for St. Paul
1907	Jan	21	10:00	St. Paul	Left for St. Paul
1907	Jan	22	10:00	St. Paul	Left for St. Paul
1907	Jan	23	10:00	St. Paul	Left for St. Paul
1907	Jan	24	10:00	St. Paul	Left for St. Paul
1907	Jan	25	10:00	St. Paul	Left for St. Paul
1907	Jan	26	10:00	St. Paul	Left for St. Paul
1907	Jan	27	10:00	St. Paul	Left for St. Paul
1907	Jan	28	10:00	St. Paul	Left for St. Paul
1907	Jan	29	10:00	St. Paul	Left for St. Paul
1907	Jan	30	10:00	St. Paul	Left for St. Paul
1907	Jan	31	10:00	St. Paul	Left for St. Paul

2		- Mary E	2	F	W			
3	50	50	On 4th W.F.F.	23	m	W	farmer	450
4			- Mary L	24	F	W	helping house	
5			- Ben Thos C	4	F	W		
6			- Jack B	2	m	W		
7	51	51	Englebright Farm	58	m	W	farmer	500 500
8			- Louise E	40	F	W	helping house	
9			- James S	21	m	W	labor on farm	
10			- Joshua T	14	m	W		
11			- William M	16	m	W		
12			- Whaley M	11	m	W		
13			- L. T. L. S	9	F	W		
14			- Mary J	7	F	W		
15			- L. S. D	2	m	W		
16	52	52	Reed D. F.	37	m	W	farmer	150
17			- Delia M	25	F	W	helping house	
18			- William T	1	F	W		
19	53	53	Bob William	46	m	W	farmer	200
20			- Catherine D	34	F	W	helping house	
21			- Mary E	16	F	W		
22	54	54	Bird Laura	44	m	W	farmer	200 250
23			- Elia J	35	F	W	helping house	
24			- Elizabeth C	13	F	W		
25			- John B	11	m	W		
26			- Sarah E	7	F	W		
27			- George T	1	m	W		
28								
29								
30								
31								
32								
33								
34								
35								
36								
37								
38								
39								
40								
41								
42								
43								
44								
45								
46								
47								
48								
49								
50								
51								
52								
53								
54								
55								
56								
57								
58								
59								
60								
61								
62								
63								
64								
65								
66								
67								
68								
69								
70								
71								
72								
73								
74								
75								
76								
77								
78								
79								
80								
81								
82								
83								
84								
85								
86								
87								
88								
89								
90								
91								
92								
93								
94								
95								
96								
97								
98								
99								
100								

1870 CENSUS WHITE CO., ARK

JACKSON TOWNSHIP

refuge					14
hansa					15
					16
					17
refuge			/		18
"		/			19
"		/		/	20
"		/			21
hansa		/			22
"		/			23
"		/			24
"		/			25
"		/			26
Troby			/		27
Carolina		11			28
hansa					29
refuge		11	/		30
"		11			31
hansa		1	*		32
Carolina			/	/	33
hansa					34
"					35
"					36
"					37
"					38
"					39
"					40



2		- Mary E	2	F	14			
3	50	50	Amelia W. F.	23	m	14	farmer	400
4			- Mary L	24	F	14	helping house	
5			- John C	4	F	10		
6			- Jack D	2	m	10		
7	51	52	Georgina's Farm	33	m	14	farmer	500 500
8			- Louisa E	40	F	14	helping house	
9			- Laura S	21	m	14	laborer farm	
10			- Andrew J	15	m	14		
11			- William M	16	m	14		
12			- Robert M	11	m	14		
13			- Lou Ellen J	9	F	14		
14			- Mary J	7	F	14		
15			- Levi D	2	m	14		
16	52	53	Frank D. F.	39	m	14	farmer	150
17			- Delia	25	F	14	helping house	
18			- William J	1	F	14		
19	53	54	Pat William	46	m	14	farmer	200
20			- Catharine D	34	F	14	helping house	
21			- Mary E	16	F	14		
22	54	54	Bird Lamp	44	m	14	farmer	300 250
23			- Eliza J	33	F	14	helping house	
24			- Elizabeth C	13	F	14		
25			- John S	11	m	14		
26			- Sarah E	7	F	14		
27			- Henry J	1	m	14		
28								
29								
30								
31								
32								
33								
34								
35								
36								
37								
38								
39								
40								
41								
42								
43								
44								
45								
46								
47								
48								
49								
50								
51								
52								
53								
54								
55								
56								
57								
58								
59								
60								
61								
62								
63								
64								
65								
66								
67								
68								
69								
70								
71								
72								
73								
74								
75								
76								
77								
78								
79								
80								
81								
82								
83								
84								
85								
86								
87								
88								
89								
90								
91								
92								
93								
94								
95								
96								
97								
98								
99								
100								

JACKSON TOWNSHIP

1870 CENSUS WHITE CO. ARK		
JACKSON TOWNSHIP		
1		13
2		14
3		15
4		16
5		17
6		18
7		19
8		20
9		21
10		22
11		23
12		24
13		25
14		26
15		27
16		28
17		29
18		30
19		31
20		32
21		33
22		34
23		35
24		36
25		37
26		38
27		39
28		40
29		41
30		42
31		43
32		44
33		45
34		46
35		47
36		48
37		49
38		50
39		51
40		52
41		53
42		54
43		55
44		56
45		57
46		58
47		59
48		60
49		61
50		62
51		63
52		64
53		65
54		66
55		67
56		68
57		69
58		70
59		71
60		72
61		73
62		74
63		75
64		76
65		77
66		78
67		79
68		80
69		81
70		82
71		83
72		84
73		85
74		86
75		87
76		88
77		89
78		90
79		91
80		92
81		93
82		94
83		95
84		96
85		97
86		98
87		99
88		100

Family Group Record

FamilySearch® Ancestral File™ v4.19

Husband's Name

Edmund YARBRO (AFN:1QXF-48K)

[Pedigree](#)

Born: 1766 **Place:** , Anson, NC
Died: 1850 **Place:** Lost Creek, Decatur, TN
Married: 5 Dec 1789 **Place:** , Franklin, NC

Father:**Mother:**

Wife's Name

Sophia "Gosset" GOSWICK (AFN:1QXF-4H1)

[Pedigree](#)

Born: 14 Dec 1761 **Place:** , , MD
Died: 1841 **Place:** Lost Creek, Decatur, TN
Married: 5 Dec 1789 **Place:** , Franklin, NC

Father: Joseph GOSWICK (AFN:1QXF-49R)[Family](#)**Mother:** Sarah GOSWICK (AFN:1QXF-4B0)

Children**1. Sex Name**

M Henry YARBROUGH (YARBRO) (AFN:1CS0-R7)

[Pedigree](#)

Born: 18 Dec 1790 **Place:** , Anson County, NC
Died: 25 Oct 1866 **Place:** Decaturville, Decatur, TN
Buried: Oct 1866 **Place:** Decaturville, Decatur, TN

2. Sex Name

M Aquilla YARBRO (AFN:1QXF-40W)

[Pedigree](#)**Born:** 1789 **Place:** , Anson, NC

3. Sex Name

F Nancy YARBRO (AFN:1QXD-RZ2)

[Pedigree](#)**Born:** 1796 **Place:** , , NC

4. Sex Name

M Joseph YARBRO (AFN:1QXD-S07)

[Pedigree](#)**Born:** 1799 **Place:** , , NC

5. Sex Name

M John H. YARBRO (AFN:1QXF-42B)

[Pedigree](#)

Born: 1801 **Place:** , Darlington, SC
Died: 1864 **Place:** , , TN

6. Sex Name

M James YARBRO (AFN:1QXD-RVF)

[Pedigree](#)**Born:** < 1790 **Place:** <, Franklin, Nc>

7. Sex Name

M William YARBROUGH (AFN:1QXF-K40)

[Pedigree](#)

Husband: Edmund Yarbrough

Born: 1766 in: Anson Co. North Carolina
 Married: December 05, 1787 in: Franklin/Anson Co. North Carolina
 Died: 1850 in: Decatur Co. Tennessee

Wife: Sophia Goswick-Yarbrough

Born: December 14, 1761 in: Baltimore, Maryland
 Died: August 07, 1841 in: Decatur Co. Tennessee
 Father: Joseph Goswick
 Mother: Sarah Goswick

CHILDREN

1 M	Name: Aquilla Yarbrough Born: Abt. 1788 Married: WFT Est. 1807-1839 Died: WFT Est. 1809-1878	in: Anson Co. North Carolina in: stayed in Decatur Co and had large family in: check Parsons Tennessee
2 M	Name: Henry Yarbrough Born: December 18, 1790 Married: March 24, 1824 Died: October 25, 1866 Spouse: Delila Crawley-Yarbrough	in: Anson County, North Carolina in: Lost Creek, Decatur Co. Tennessee in: Yarbrough Centary Decatur Co. Tennessee
3 M	Name: William Yarbrough Born: 1794 Married: WFT Est. 1812-1850 Died: WFT Est. 1844-1886 Spouse: Rachel Shelby-Yarbrough	in: Meckleburg Co., North Carolina in: Stayed in Decatur Co and had large Family
4 F	Name: Nancy Yarbrough-Fisher Born: Abt. 1796 Married: WFT Est. 1810-1843 Died: WFT Est. 1810-1890 Spouse: Sylvanus Fisher	in: Meckleburg Co., North Carolina
5 M	Name: Joseph Yarbrough Born: Abt. 1799 Died: WFT Est. 1800-1889	in: Mecklenburg Co, North Carolina
6 M	Name: John H. Yarbrough Born: Abt. 1801 Died: 1864	in: Mecklenburg Co. North Carolina in: South Carolina

Husband: Joseph Goswick

Born: 1724 in: Baltimore, Maryland
 Married: WFT Est. 1744-1774
 Died: WFT Est. 1768-1816
 Father: Nicholas Thomas Goswick
 Mother: Ebarilla Goswick

Wife: Sarah Goswick

Born: 1731 in: Warren Co., North Carolina
 Died: WFT Est. 1768-1826 in: Warren Co., North Carolina

CHILDREN

1 F	Name: Amirillen Goswick Born: April 07, 1752 Died: WFT Est. 1753-1846	in: Baltimore, Maryland
2 F	Name: Ann Goswick Born: May 23, 1754 Died: WFT Est. 1755-1848	in: Baltimore, Maryland
3 M	Name: Avililler Goswick Born: August 14, 1757 Died: WFT Est. 1758-1847	in: Baltimore, Maryland
4 M	Name: Nicholaus Goswick Born: September 05, 1759 Died: WFT Est. 1760-1849	in: Baltimore, Maryland
5 F	Name: Sohpie Goswick-Yarbrough Born: December 14, 1761 Married: December 05, 1787 Died: August 07, 1841 Spouse: Edmund Yarbrough	in: Baltimore, Maryland in: Franklin/Anson Co. North Carolina in: Decatur Co. Tennessee
6 M	Name: Joseph Goswick Born: June 09, 1765 Died: WFT Est. 1766-1855	

GOSWICK

The above was pulled off
 computer by Tommy Street.

(It has Sarah Goswick
 rather than Gossett)

Family Group Sheet

Husband: Nicholas Thomas Goswick

Born: WFT Est. 1674-1709
Married: WFT Est. 1700-1746
Died: WFT Est. 1737-1792

Wife: Ebarilla Goswick

Born: WFT Est. 1682-1710
Died: WFT Est. 1737-1797

CHILDREN

1 F	Name: Mary Gostwick Born: December 14, 1722 Died: WFT Est. 1723-1816	in: Baltimore, Maryland
2 F	Name: Anne Goswick Born: December 17, 1723 Died: WFT Est. 1724-1817	
3 M	Name: Joseph Goswick Born: 1724 Married: WFT Est. 1744-1774 Died: WFT Est. 1768-1816 Spouse: Sarah Goswick	in: Baltimore, Maryland
4 F	Name: Betty Gostwick Born: November 05, 1729 Died: WFT Est. 1730-1823	
5 M	Name: George Gostwick Born: June 16, 1735 Died: WFT Est. 1736-1825	

Prepared By:

MRS. STAHLER LINN, JR.

CERTIFIED GENEALOGIST

BOX 1948

SALISBURY, NORTH CAROLINA 28145-1948

PHONE (704) 633-3575

1 May 1986

Lt. Col. Varney Reed Nell
Ms Loetta Venable
2301 SW 90th
Oklahoma City, OK 73159

Dear Ms Venable:

I am now replying to your inquiry of 25 April concerning establishing the lineage of EDMUND Y. YARBROUGH, b. c1766 in Anson Co., NC, d. 1850 Decatur Co., TN, m. Sophia Gossett, b. 1761 Anson Co., d. Decatur Co., TN 1841. Ch, all b. NC: Henry Yarbrough, b. 1790; James Yarbrough, b. 1792; William Yarbrough, b. 1794; Nancy Yarbrough, b. 1796; Joseph Yarbrough, b. 1799; John H. Yarbrough, b. 1801.

Briefly, a Courthouse fire of 1868 destroyed many of the court records of Anson County. Without that, your strategy would simply have been to examine the land records showing Edmund Y. Yarbrough disposing of his property in Anson prior to removing to Decatur County, TN, and trace the land. You do not mention when Edmund Y. Yarbrough left Anson. There are thirty-eight volumes of deed records extant for Anson for the period 1749-1838, and it's possible the Yarbrough land records therein will supply some of your answers.

Additionally, there are 54 fibrebox boxes of Estates Records at the NC Archives, 109 E. Jones Street, Raleigh, NC 27611, and you can write and see if there are any for Yarbrough, enclosing a SASE and a \$5.00 search fee.

I have checked the extant Anson County wills for you for Gossett and Yarbrough for the period 1751-1900. There is a will for a Jonathan Yarbrough dated 1812 recorded in Anson County Will Book 2:197. You might want to order a xerox of it from the Courthouse in Wadesboro, NC.

I have checked the abstracts of the Anson County deeds 1749-1766. Richard Yarbrough appears to be the earliest there of that name; there are no extant Gossett deeds for that period.

The 1763 Anson County Tax List shows Joel, Humphrey, and Jonathan Yarbrough as taxables, no Gossett.

The 1766 will of Robert Lee of Anson County names a daughter, Mary Yarbrough [Anson County Wills and Estates, pp. 14-16]. She appears to have been the wife of Humphrey Yarbrough [Ibid., p. 299].

No Edmund Yarbrough appears as a head of household in the 1790 census of Anson County. Richard Yarbrough, Davis Yarbrough, Jonathan Yarbrough, Humphrey Yarbrough, James Yarbrough, William Yarbrough are the 1790 heads of household of that surname in Anson County. No Gossett is a head of household in Anson in 1790. Edmund Yarbrough does not appear as a head of household in the 1800

Anson County census.

Since the marriage bond for Edmund Yarbrough to Sefiah Goswick of 9 Dec. 1789 was issued in Franklin County, NC, you will probably find her parents in that county. A Charles Yarbrough died in Franklin County prior to 1812, and a division of his estate appears in Franklin County Deed Book 18:262. Lot #2 went to Edward Yarbrough, which might be a misreading of Edmond. There were many Yarbroughs in Franklin County also.

If you should need a genealogist to look up these records for you, I suggest Mr. William D. Bennett, Rt. 1, Box 232, Wendell, NC 27591.

Sincerely,

Jo White Linn

(Mrs. Stahle Linn, Jr.) C.G.

I assume you know there is an Edmund Yarbrough as head of household in Mecklenburg County, NC, in the 1800 and 1810 census with a lot of little boys in his household.

First Yarborough Immigrants to America

In all I have seen of research done on the family of YARBOROUGH in the United States, there seems to be a unanimous decision that anyone who can trace their ancestors as having been here before the Revolutionary War were all descendants of Richard Yarborough I. Although it is evident that they were of the same line of origin, it is also evident that there were other Yarborough immigrants in the early settlement of this country.

RICHARD YARBOROUGH I & II, 1615-1652

Records of English passage lists shows Richard Yarborough booked passage to Virginia in 1635. If the records are accurate (Wm. and Mary Quarterly, Vol. 5, p. 233), he died at age 87 in 1702. This means he was born in 1615 and was 20 years old when he first come to Virginia. We know that Richard Yarborough I. had a son, Richard II, who was also born in England, (from Court case in 1690). This Richard stated that in 1690 he was 38 years old and was born in England (1652). It is obvious that Richard I made the voyage between England and Virginia more than the one time in 1635. While we do not have the record of the exact place Richard I landed on this continent, it is possible he landed in the vicinity of Yorktown. Some of the earliest records show him present in Counties of Northhampton, King and Queen and King William. It is obvious that his course of migration was up the York River. It has been established that Richard I was of the branch from Yarborough in Lincoln, England, referred to as the "Lincolnshire" branch. About 1600, several members of the "Lincolnshire Yarboroughs" settled in other Counties: William Yarborough settled in Yorkshire, Charles in Nottinghamshire, and Francis in Northamptonshire. One Edmund Yarbrough made his home at Balne Hall, in Yorkshire, and married Sarah, daughter of Thomas Wormeley, of that county.

EDMUND or EDWARD I & II, c 1630-1650

It would appear, from the following record, that this Edmund was also an immigrant to the colonies. Found in the records of York County, Virginia, Book III - Wills, Deeds and Orders, p. 28: "It is ordered that the Sheriff convey Edward Yarbrough, son of Edward Yarbrough, deceased, to the next court to be delivered to constable and from that constable to another constable until he be delivered to Col. Robert Abrall, who is desired by this Court to dispose of him to his Mother (nee Wormely) or other ways which are fitting. Next Court to be 24 August, 1658."

(The above record may be found in "Virginia Colonial Abstracts" Series 2, Vol. 5, Duvall York Co. 1657-1659.)

CHRISTIAN or CHRISTOPHERE YARBROUGH, c 1630

(*Ref: "Early Virginia Immigrants 1623-1666 - George Cabel Greer, Baltimore Genealogical Publishing Co., 1960, p. 374)

Christian Yarblow is shown among the arrivals in Virginia in 1653 sponsored by Thomas Willis. Some researchers (Nelle Morris Jenkins) have stated this Christian Yarblow was the same as Richard II and was so called to distinguish him from his Father, Richard I. I believe this not to be so as I feel Richard Yarborough I would have sponsored his own son if it were so.

AMBROSE YARBROUGH b. c 1710

The Yarborough "cousins" in England did have communication with those who came to Virginia in the colonial days and according to researcher Senator George Washington Yarborough (D. Alabama - probably the foremost authority on the Yarborough Family in America since 1930) another immigrant ancestor of the family was Ambrose Yarbrough who left England in 1732.

Following will be some brief history of these early immigrants:

IMMIGRANT RICHARD YARBOROUGH

Found in the records of the House of Burgesses, the first representative legislative body in America, there are references to Richard Yarburgh, Yarberry (Yarborough).

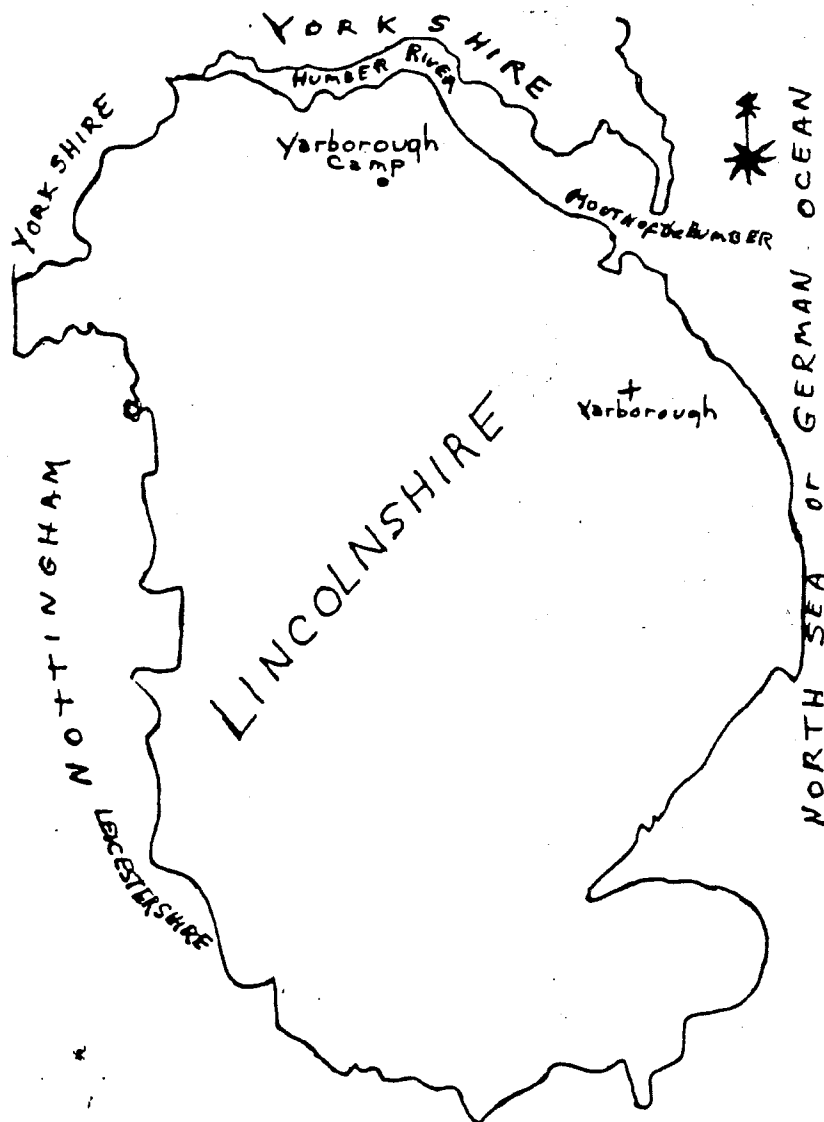
"At a Grand Assembly began at Green Spring, the 20th day of February 1676, these following Orders of Public charge were made and allowed, viz. *** To Richard Yarberry (sic) 6,000 lbs. of Tobacco ***

(Journals of the House of Burgesses of Virginia, 1659-1693, H. R. McIlwaine, 1914 Richmond, Virginia State Library - p 81)

"Att a Generall Assembly Begun att James Citty the 16 day of Aprill in the Thirty sixth yeare of His Majties Raigne And in the yeare of our Lord 1684. These following Orders of Publique Charge and Levy were made *** New Kent County *** To Richd Yarburgh (sic) for his service severall tymes in discovering the Senerca Indians and other publique service wth Coll Byrd 001620 (lbs. tobacco) ***

(Ibid., pp 253 & 256)

"Xber 7th 1685 *** The Report as come from ye Committee of Claimes, relating to ye New York and Albany Charge is by ye house allowed of and Mr. Auditor Bacon is desired to pay *** To Richd Yarborough Interpreter for his voyage & services L.20 s.00 d.00"



From a map published in London in 1805 by Vernor, Hood & Sharpe

FAMILY GROUP

No. _____ Surname _____

Husband's						
Full Name: William McGuire						
VITAL DATA	DAY	MONTH	YEAR	TOWN	COUNTY	STATE OR COUNTRY
Birth	4	April	1785		Rowan	NC
Christen.						
Marriage						
Death	17	Dec.	1865	Cause:		
Burial				Cemetery:	Walton Cemetery - Tipton Co., TN	
Father's				Mother's		
Full Name Edward McGuire				Maiden Name Isabel		
Other wives: Remarks: Military						
Wife's Full						
Maiden Name: Frances Strange						
VITAL DATA	DAY	MONTH	YEAR	TOWN	COUNTY	STATE OR COUNTRY
Birth	25	Nov.	1792		Rowan	NC
Christen.						
Death	20	Oct.	1862	Cause:		
Burial				Cemetery:	Walton Cemetery - Tipton Co., TN	
Father's				Mother's		
Full Name William Strange				Maiden Name		
Other husbands: Remarks:						
(ARRANGE IN ORDER OF BIRTH) CHILDREN						
SEX	FULL NAME			VITAL DATA	DATE	PLACE
	1	William S.		Birth	ca. 1808	Rowan Co. NC
				Death	ca. 1849	Tipton Co., TN
				Marriage		To: Margaret ?
				Birth	1809	Rowan Co., NC
	2	Robert		Death	May 1860	Tipton Co., TN
				Marriage		To: Elizabeth
				Birth	1814	Rowan Co., NC
				Death	ca. 1888	Tipton Co., TN
	3	Alfred		Marriage	12 Feb. 1842	To: Louisa Hartsfield
				Birth	1 Aug. 1818	Rowan Co., NC
				Death	11 Mar. 1874	Walton Cem.-Tipton Co., TN
				Marriage		To:
	5	Obadiah		Birth	25 July 1820	Rowan Co., NC
				Death	21 Sept. 1872	Walton Cem.-Tipton Co., TN
				Marriage		To:
				Birth	ca. 1826	Tipton Co., TN
	6	Eliza		Death		
				Marriage		To:
				Birth	26 Aug. 1828	Tipton Co., TN
				Death	13 Mar. 1853	Indian Creek Cem.-Tipton Co., TN
	7	Susan		Marriage	3 Apr. 1846	To: Landon Bradford Yarbro
				Birth	5 Aug. 1830	Tipton Co., TN
				Death	24 May 1889	Munford Cem.-Tipton Co., TN
				Marriage	28 Jan. 1852	To: Robert Smith
	9	Washington		Birth	ca. 1833	Tipton Co., TN
				Death		
				Marriage		To:
				Birth		
	10			Death		
				Marriage		To:
				Birth		
				Death		
				Marriage		To:
				Birth		
				Death		
				Marriage		To:



ROWAN COUNTY, NC WILLS

C:64. Edward (X) McGuire. 20 Mar. 1785. Prb. 1785. Wife Isabel to have home plantation. Children to be reared and schooled and sons bound apprentices to blacksmith trade. Sons, all of whom are under 14: Anderson, Henry and Edward. Daus: Anne, Hannah, Ellison, Sarah and Rachel. Child in being. Exrs: wife Isabell and friend Jacob Wiseman. Wit: Robert Mackie, Thos Carson, Wm. Moore.

ROWAN COUNTY, NC - McCUBBINS COLLECTION

Book 19, page 831: August 5, 1806, William McGuire - no wife signs - lets Gasper Smith (both of Rowan Co., N. C.) have _____ on Potts Creek, for \$70.00 witnessed by Ph. Smith & Joseph Park and Acknowledged in Aug. 1806. (This had been left by the deceased Edward McGuire to his son Anderson McGuire and he also died but without a will.)

ROWAN COUNTY, NC WILLS

G:250. Isabelle McGuire. 11 Oct. 1812. Prb. 11 Nov. 1812. Sons & daughters. Son Edward (dead leaving orphans), William & Henry. Daughter-in-law: Peggy my flax-wheel. Grandchildren: William & Robert (what my son William now has). Servant: Sarah Wiseman. Exr: son Henry. Witnesses: David Smith & Elizabeth Moore.

ROWAN COUNTY, NC BRIDGE PETITION, 1814

Henry McGuire, George Smith, George Smith Junr, Peter Smith sener, Thomas Yarbrow, Godfrey Ratts, William McGuire and others.

VENUE TO ROWAN SUPERIOR COURT - Spring Term 1818

William McGuire and others.

DAVIDSON COUNTY, NC WILLS

1:22 WILLIAM STRANGE. 6 Nov. 1822. Prob. July 1823, Son Benjamin Strange - 50¢ in addition to the land & other property already advanced. Granddaughters Frances Maley & Ann McGuire (daughters of Edward McGuire, deceased) 50¢ each. Lawrence Washington Strange & Sophronia Evelene Strange \$100.00 each. The rest to my three daughters, Peggy McGuire, Susanna Myers & Frances McGuire, to be equally divided. Exed: Sons-in-law Henry McGuire & William McGuire. Wit: Robert Moore, Walter G. Jones and John Lynn.

DAVIDSON COUNTY, NC DEED ABSTRACTS

L:249 & 250. 6 Mar. 1824. James Wiseman, High Sheriff, Henry McGuire and William McGuire of Rowan against heirs of Robert Strange. \$482.08 recovered by Obidiah M. Smith, Jacob Miller and others of the said Robert Strange heirs. Goods and chattels, land and tenements. No goods or chattles to be found so took the land. Jacob Long's line, Samuel Sloan's corner, David Smith's line, William Strange's line.

120 acres. Public sale 8 Jan. 1824 when Henry and William McGuire bought the land. Wit: Ph. Smith, David Smith

DAVIDSON COUNTY, NC DEED ABSTRACTS

1:489 & 490. 17 Mar. 1824. Daniel Myers and Susannah, his wife, of Barren County, Kentucky to Henry Macquire and William Macquire. On waters of Swearing Creek, and owned by William Strange, dec'd., which land William Strange in his lifetime devised to his three daughters: Margaret, wife of said Henry Macquire, Susannah, wife of said Daniel Myers, and Frances, wife of said William Maquire. One tract by deed from the State of North Carolina, #513, sold as confiscated property of Henry E. McCulloch, 18 Nov. 1784. 150 Acres from which tract William conveyed 16 Acres to Joseph Haden, dec'd. in his lifetime, leaving a balance of 136 Acres, one-third of the 136 Acres now to be conveyed. Also one-third of 60 Acres, being a balance of 180 Acres purchased by William in his lifetime from Abraham Wommack 9 Mar. 1805. This being all of the one-third lands devised by William to Susannah, his daughter. Susannah examined in Barren County, Kentucky 15 Oct. 1824 by Richard Garnett, clerk. Ben. Monroe ack'd Garnetts signature and Joseph Desha, Gov. of Ky. certified Monroe's.

DAVIDSON COUNTY, NC DEED ABSTRACTS

2:45. 5 Oct. 1825. William McGuire and Fanny McGuire, his wife, of Rowan to William Holt. Undivided half of tract on Swearing Creek. Jacob Long, Merrill Haden, John Miller's lines, McKee's corner, now Hargraves, Sloan's corner, Long's line. 347 Acres. Wit: Luco Mitchell, Anthony Hatch

ROWAN COUNTY, NC - McCUBBINS COLLECTION

Book 28, page 500: Oct. 5, 1825, William R. McGuire of Rowan Co., N.C. - no wife signs - lets William R. Holt of Davidson Co., N.C., have 93 4/10 acres on Potts Creek next Anderson Ellis, Robert Moore & others - a more detailed description says Dr. Robert Moore & Gasper Smith - for \$1402.20, witnessed by W. Hargrave & William H. Slaughter & Acknowledged on Oct. 5, 1825.

TENNESSEE MORTALITY SCHEDULE - 1850-1860-1870-1880

McGUIRE, Robert 50, NC, May, farmer, suicide by hanging self, T-60

TOMBSTONES FROM WALTON CEMETERY - TIPTON COUNTY, TN

William McGuire
Born Apr. 4, 1785
Died Dec. 17, 1865

Anderson McGuire
Born Aug. 1, 1818
Died Mar. 11, 1874

Frances McGuire
b. Nov. 25, 1792
d. Oct. 20, 1862

Obadiah McGuire
Born July 25, 1820
Died Sept. 21, 1872

HEIRS OF WILLIAM McGUIRE - \$937.00 each

Obadiah McGuire
Alfred McGuire
Anderson McGuire
William (son of Robert) McGuire
Minerva Jane Smith
Jerusha Coats
Sarah Eliza Griffith
Mary Jane McGuire
John William McGuire
Rosetta V. Morton
James Yarbrow
Wiley McGuire

ROWAN COUNTY, NC - 1810 Census - page 40

William McGuire

- 1 - free white male under 10
- 1 - free white male 16 to 26
- 1 - free white female 16 to 26

ROWAN COUNTY, NC - 1820 Census - page 334

William McGuire

- 5 - free white males under 10
- 1 - free white male 10 to 16
- 1 - free white male 16 to 26
- 1 - free white female 10 to 16
- 1 - free white female 16 to 26

TIPTON COUNTY, TN - 1830 - page 266

William McGuire

- 1 - free white male 5 to 10
- 2 - free white males 10 to 15
- 1 - free white male 15 to 20
- 1 - free white male 20 to 30
- 1 - free white male 40 to 50
- 2 - free white females under 5
- 1 - free white female 30 to 40

TIPTON COUNTY, TN - 1860 CENSUS

19-353 - 16 June - P200

McGuire, William T.	24	TN	Farmer	(Wm. McGuire m. Sarah Stephens 7 Apr. 1855)
Sarah	21	TN		
Mary J.	1	TN		
Learcy, Mary	12			

20-353 - 18 June - R500-P800

McGuire, Elizabeth	51	NC	Farming
Sarah L.	15	TN	Student

2-358 - 20 June - P4300

McGuire, Obe	39	NC	Farmer
Liza E	27	NC	

7-365 - 11 June

McGuire, Sarah	47		
Living in home of W. L. & Lorana Burlison			

3-414 - 2 July - R200-P340

McGuire, Frances	45	KY	Farmer	
Margaret E.	25	TN		
Henry X.	23	NC	Farm laborer -	P350
Wm. M.	20	NC		P150
Germsha R.	19	NC		P150
Sarah	15	NC		P150

10-417 - 5 July - R2600-P300

McGuire, Alfred	46	NC	Farmer
Louiza J.	39	TN	Housewife
John A.	17		
Narsissa	15		
Ann E.	12		
Sara F.	10		
Nepolian F.	6		
Isabella W.	4		
Louiza J.	2		

(Louiza (Louise) J. b. 1858 d. 1882 m. 31 Jan. 1817
to Jessie Peeler)

12-418 - 5 July - R10,500-P10,500

McGuire, William	75	NC	Farmer
Frances	68		Housewife
Anderson	41		Brick mason

TIPTON COUNTY, TN - 1870 CENSUS

21 - 12 July - R6000-P600

McGuire, Anderson	51	M	NC	Brick mason
Susan	35	F	SC	Keeps house
Loravaset, Eddie	12	M	TN	
Willie	10	M	TN	

41 - 23 July - R4000-P3500

McGuire, Obedia	50	M	NC	Farmer
Elizabeth	39	F	TN	

177 - 8 Aug. - R8000-P2365

McGuire, Alfred	56	M	NC	Farmer
Louise	45	F	TN	Keeps house
S. F.	20	F	TN	
N. F.	16	M	TN	Farm labor
Isabella	14	F	TN	
Louisa J.	12	F	TN	
William A.	9	M	TN	

183 - 11 Aug. - R400-P405

McGuire, Frances	56	F	KY	Keeping house
Margaret	24	F	TN	At home
William	30	M	NC	Farmer R400-P100
Fannie	21	F	TN	
Sarah	1	F	TN	
James	28	F?	NC	
Sarah	25	F	NC	

20

McGuire, Harry	30	M	B	TN	Labors farm
Ann		F	B	GA	

TIPTON COUNTY, TN - County Minute Book D - Jan. 1846 to April 1853

Pg. 211 - Luther W. Myers guardian of minor heirs of Wm. S. McGuire, deceased, this day appeared in open Court and acknowledged the due execution of a Power of Attorney from him to Jas. Wiseman of Davidson County, State of North Carolina, bearing date this 7th day of January 1850, which said Power of Attorney was thereupon ordered by the Court to be certified accordingly for record by the Clerk.

Pg. 212 - There being present and all voting in the affirmative, Esquires Thos. Owen, McGuire, Cullum, Turnage, Dowell, Baird, Hill, Sherrod and Sommerville.

Pg. 212 - Ordered by the Court that the County Trustee pay to O. McGuire the sum of Two and 50/100 dollars for attending one day in the present year and holding Court in the absence of Wm. A. Turnage, Esq. as one of the Quorum.

Pg. 212 - It is ordered by the Court that the County Trustee pay to Robt. McGuire the sum of one hundred thirty four and 95/100 dollars for building a new bridge as per contract over Indian Creek on the Covington and Randolph Road.

ABOVE INFORMATION FROM TENNESSEE ARCHIVES - THEY DID NOT SEND DATE OF ENTRY.

INFORMATION BELOW FROM JEANETTE WILSON. SHE DID NOT SEND DATE.

DAVIDSON COUNTY, NORTH CAROLINA

Feb. Term Court of Pleas & Quarter Session

Davidson County, NC

Rufus W. Myers) This case coming in to be heard upon the transcript of
v) record from the County of Tipton and State of Tennessee
William R. Holt) and the suggestions of council and the court being fully
satisfied that the said R. W. Myers has been duly appointed Guardian of the
said Margaret E., Henry L., William M., Jerusha R. and Susan Malinda McGuire
children of William S. McGuire dec'd. and that the bond has been given with
Surities approved by said court, it is ordered adjudged and decreed that the
said Wm. R. Holt come to a settlement of the estate of his Wards in his hands
that an account be taken to ascertain the amount thereof and that he pay over
to the petitioner or his lawful attorney said account when ascertained. It
is further ordered that C. F. Lowe be appointed commissioner to take said
account and report to next court.

TIPTON COUNTY, TN - County Minute Book F, pg. 70 - 7 Feb. 1859

This day came R. W. Myers Guardian of William, Jerusha R. & Sarah M. McGuire with Laurence Page & Davies Slaughter for security and renewed his general guard bond in the penalty of eight hundred dollars conditioned according to law and also executed a special bond in the penalty of two hundred and fifty dollars conditioned to account for the interest of said minors in the proceeds of the sale of a tract of 105 acres of land belonging to the Estate of A. F. McGuire decd. which funds is now in the hands of the clerk of this Court both of which bonds were acknowledged before and approved by the Court and ordered to be recorded.

TIPTON COUNTY, TN - County Minute Book F, pg. 673 - January Term 1866

It appearing to the satisfaction of the Court that William McGuire, late a citizen of this County has died intestate and it further appearing that O. McGuire and Alfred McGuire are entitled to administer on his estate, and the said O. McGuire and Alfred McGuire having been sworn faithfully to perform the duties of Administrators and having made bond in the sum of ten thousand dollars with Anderson McGuire, R. W. Smith, John Maley and A. Walk as their sureties condition for the performance by them of all the duties required of them in the Administration of said estate. It is ordered that the said O. McGuire and Alfred McGuire be clothed with all the powers and charged with all the duties of Administrators of said William McGuire decd.

TIPTON COUNTY, TN - County Minute Book F, pg. 701 - Tues. Feb. 6, 1866

On application Wm. McIntosh was this day appointed guardian of R. V. Morton minor heir of Wm. McGuire deceased. Whereupon came the said Wm. McIntosh with Peyton J. Smith and Marion Miller as his sureties, and made bond in the final sum of one thousand dollars conditioned and payable as the law requires and directs. It is therefore ordered that the said Wm. McIntosh be charged with all the powers and clothes with all the duties of Guardian of said R. V. Morton minor.

TIPTON COUNTY, TN - County Minute Book F, pg. 715 - March Term 1866

This day came into open court Wm. McIntosh and prayed leave to resign his guardianship of R. V. Morton minor heir of Wm. McGuire decd. which being unexcepted to was allowed; and on application L. B. Yarbrough was appointed guardian of said R. V. Morton and James Yarbrough minor heirs of said Wm. McGuire; whereupon came the said L. B. Yarbrough and with J. A. Yarbrough, W. Freedle and David Yarbrough as his sureties made bond in the final sum of five thousand dollars, conditioned and payable as the law requires and directs. It is therefore ordered by the Court that the said L. B. Yarbrough be charged with all the duties and clothed with all the powers of guardianship of said R. V. Morton and James Yarbrough minors as aforesaid.

And thereupon the said Will in Court appeared in Open Court with Daniel Calhoun & Richard Vaughan as his Secutors And signed sealed and acknowledged a bond in the penalty of Ten thousand dollars payable and conditioned according to law which was approved by the Court and ordered to be recorded And the said William Young was duly qualified by taking the oath prescribed by law and it was further ordered that letters of Administration issue to him

This day came R. H. Myers Guardian of William Erskine R. & Sarah W. McGinn with James Paget & Daniel Laughton for security and presented his General Grant Bond in the penalty of Eight thousand dollars conditioned according to law and also executed a special bond in the penalty of two thousand and fifty dollars conditioned to account for the interest of said Minors in the proceeds of the Sale of a tract of 115 Acres of land belonging to the Estate of A. J. McGinn Deed which fund is now in the hands of the Clerk of the Court both of which bonds were acknowledged before and approved by the Court and ordered to be recorded

January Term 1866
It appearing to the satisfaction of the Court that
William McQuire, late a citizen of this County
has died intestate and it further appearing
that O. McQuire and Alfred McQuire are en-
titled to administer on his estate, and
the said O. McQuire and Alfred McQuire
having been sworn faithfully to perform the
duties of Administrators and having made
bond in the sum of ten thousand dollars
concord with Anderson McQuire, R. H. Smith,
John Muley and A. Walk as their sureties con-
ditioned for the performance by them of all
the duties required of them in the Adminis-
tration of said estate: It is ordered that
the said O. McQuire and Alfred McQuire be
clothed with all the powers and charged with
all the duties of Administrators of said
William McQuire Decd.

On application James H. Petty was this day appointed guardian of E. A. Petty minor heir of Nancy Petty deceased, whereupon came the said James H. Petty with R. J. Lee and A. Bryan as his sureties and made bond in the penal sum of five hundred dollars conditioned and payable as the law directs. It is therefore ordered that the said James H. Petty be charged with all the duties and clothed with all the powers of guardian of said E. A. Petty minor.

On application Wm. Mcintosh was this day appointed guardian of R. V. Morton minor heir of Wm. McInure deceased, whereupon came the said Wm. Mcintosh with Peyton J. Smith and Marion Miller as his sureties, and made bond in the penal sum of one thousand dollars conditioned and payable as the law requires and directs. It is therefore ordered that the said Wm. Mcintosh be charged with all the powers and clothed with all the duties of guardian of said R. V. Morton minor.

as the law requires and
It is therefore ordered by the Court that the said S. M. money
be charged with all the duties and clothed with all the powers
of guardian of said minors.

This day came into open Court Wm. McIntosh and prayed
leave to resign his guardianship of R. V. Morton minor
heir of Wm. McQuire Decd. which being unexcepted to
was allowed; and on application L. B. Yarbrough
was appointed guardian of said R. V. Morton and James
Yarbrough minor heirs of said Wm. McQuire;
Whereupon came the said L. B. Yarbrough and with
J. A. Yarbrough, W. Freedle and David Yarbrough as his
syndics made bond in the penal sum of five
thousand dollars, conditioned and payable as
the law requires and directs;
It is therefore ordered by the Court that the said
L. B. Yarbrough be charged with all the duties and
clothed with all the powers of guardian of
said R. V. Morton and James Yarbrough - minors
as aforesaid.

March Term 1866

and they are to be divided equally in severalty - leaving the land lying west of said line in common, and that they make an equal division of the cattle horses, mule farming implements and other personal property of which said parties are the joint owners and set apart to each of them their shares of the same in severalty. And that they make their report thereon to the next term of this Court.

Obadiah M^cGuire and Alfred M^cGuire

Anderson M^cGuire, Robert W. Smith & Wife Minerva J. Smith, Milton A. Leavitt and Wife Jerusha A. Leavitt, Wm. H. Griffith and Wife Sarah E. Griffith & Mary J. M^cGuire and John W. M^cGuire, who defend by their regular Guardian Thos. H. Tillman, J. W. Morton & Wife Rosetta W. Morton & James Garbrock who defend by their regular guardian L. B. Smith and Wiley M^cGuire -

Be it remembered that on this 4th day of December 1866 came on this cause to be heard before the Worshipful County Court, when it appeared to the Court that order of publication has been duly made as to defendants Wiley M^cGuire and J. W. Morton and that the same has been duly published in the Memphis Appeal a newspaper published in the City of Memphis for four consecutive weeks requiring the defendants

December term 1866--

to appear before this Court at the present term and plead answer or demurr to complainant's bill, and that they have failed so to do. And it further appearing to the Court that the defendants Milton A. Leavitt and Jeremiah A. Leavitt and William H. Griffith & wife Sarah A. Griffith have been served with subpoena in this cause five days before the present term of this Court and that they have failed to plead answer or demurr to complainant's bill: It is ordered that the bill be taken for confessed as to said defendants and set for hearing ex parte as to them; and thereupon this cause came on for further hearing upon the bill, exhibit the said order for confession and answers of all the other defendants as to which complainant expressly waive their right to have the same filed 20 days before the cause is at issue. ^{Where} when it appeared to the Court that Wm. M. Guire died intestate in said County, that complainant are his Administrators, and that said intestate left no widow & left him surviving the following persons his only heirs at Law to wit his sons Complainant Obadiah & Alfred and defendant Anderson & Wiley and his daughter Minerva J. Smith wife of defendant Robert W. Smith and defendant Jeremiah A. Leavitt wife of defendant Milton A. Leavitt and Sarah C. Griffith wife of Wm. H. Griffith his grand daughters being daughters of his deceased son Robert M. Guire and Mary J. M. Guire and John W. M. Guire; his great grand children being children of William A. M. Guire a deceased son of said Robert A. M. Guire and the defendant Rosetta A. Morton wife of J. W. Morton and James Warbrock his said intestate grand children being children of his deceased daughter Susan Warbrock; And it further appearing that said intestate died seized and possessed of the following lands to which he has title to wit one tract lying and being in the County of Lipton in the 11 Survey or district

Minutes Lipton County Court ¹⁷⁶

in range 8, Sections 7 & 8 on the waters of Big
 River - Beginning at a stake standing at the ^{East} ^{part of Grant} ^{Thomas}
 west corner of the 500 acre tract conveyed by Jacob
 Lipton to George Keller and running with the ^{of said grant} second
 line thereof reversed East ninety nine poles &
 links to a stake, thence leaving said line and
 running North two hundred and forty one and
 an half poles to the sixth line of the original
 grant for 2625 acres, and thence with the said
 sixth line West ninety nine poles and nine
 links to a stake and thence by a straight line
 to the beginning, containing one hundred and
 fifty acres more or less. Also one other tract
 of land lying & being in the County of Lipton State
 of Tennessee. Beginning at the North West corner of
 Thomas Salbot's tract of 2625 acres of which to
 be taken off and runs thence east with the ori-
 ginal line one hundred and forty eight poles to
 Gray's corner thence South with Gray's line one
 hundred and eight and one eighth poles to a
 Sugar tree on the South side of a branch with
 elm pointers thence West 148 poles to a stake
 Alexander Lucas line and thence North 108 1/8 poles
 to the beginning. Which two tracts of land
 adjoining and constitute one tract.
 And also ~~the~~ other tracts lying in the county
 Lipton & State of Tennessee on the waters of
 creek of Big Hatchie River the first bounded
 as follows: Beginning at Parker Rodgers
 North east corner a sweet gum and dogwood
 marked P.R., running thence West with his
 passing his line corner crossing a branch at 268
 poles, & an other at three hundred & twelve poles
 to the range line to an ash marked A.W. 4
 thence North with the range line 320 poles to a
 black oak marked A.W. 9. Having crossed a branch
 at fifty four poles bearing South East - then
 East 320 poles to a stake, thence South to the
 beginning containing six hundred & forty
 acres; the second of said three tracts situated
 in Section 7 Range 4 & 5 founded on a
 grant No 20759 to ^{David} Taylor for 77 acres
 Beginning at the North East corner of
 Benfay's odd 80 acre entry at a hickory
 and poplar marked B.C. running West 24 poles

320 poles

December term 1866

to a poplar and white oak marked O.B.H. thence
B Hays corner thence north with his line
120 poles to a white oak marked A.Y., thence
East passing James & Grays corner & with
their line in all 205 poles & 14 links to a
stake, thence South 52 poles to a white oak
on Alfred W. Taylors North boundary line of
his 640 acre entry, thence West with his line
187 poles & 14 links to a black oak marked
A.W.T. his corner thence South with his
line 88 poles to the beginning. And also one
other tract in Range 5 section 7 Beginning
at the N.E. corner of Charles W. Helings entry
of No 107 at a black gum marked M.C. run-
ning South 320 poles to a sassafras & dogwood
marked C.M. thence East with J.P. Taylors line
40 poles to an ash & two dogwoods marked B.P.
thence North with Alfred W. Taylors line 320
poles to a hickory & poplar marked B.C. thence
West to the beginning. ^{Containing 50 acres} ^{three thirds}
cepting out of the last described tract 2
acres which had been conveyed by said Wm.
M.C. Quire in his lifetime to Robert M.
Quire in his lifetime which said two acres
are thus bounded Beginning at a red oak
marked as a corner thence South 16 poles
to a white oak, thence West 20 poles to a
stake, thence North 16 poles to an apple tree
marked as a corner thence east 20 poles to
the beginning.
And it further appearing to the Court that Com-
plainants are entitled to have said land par-
titioned and to hold their shares in severalty
but it not appearing to the Court whether
it is manifestly for the benefit and
advantage of said minor defendants
that said land should be sold for par-
tition or not it is referred to the Clerk
to take proof and report to the present
term of this Court on this Question and
now on the coming in of the report of
the report of the Clerk which is not except-
ed to and is confirmed, it appears to the
Court from said report and proof that it
is manifestly for the benefit and advan-

at tracks
adjoining
completely
a tract

Minutes Tipton County Court

of the minor defendants that said land should be sold. It is therefore ordered, adjudged and decreed that the clerk of this Court sell said land at public sale in Covington to the highest bidder for one half cash and the other half on a credit of 12 months from the date of sale allowing the purchaser a discount at the rate of 6 per cent per annum on the deferred payment for cash if they wish to pay the same, taking from the purchaser notes with at least two good securities for the payment of the last half of said purchase money and reserving a lien on the land to secure the same, and that in making said sale he shall sell the 28 ^{acres} all in one tract and that he shall sell the 80.0 acres in lots to suit the purchaser if in his judgment the same will enhance the price of said land and that in selling it in lots or parcels he may adopt the division of the same made by the County Surveyor a certificate of which survey is filed with the papers in this cause if he finds said division judicious. And that before making said sale the Clerk shall advertise the time and place of the same for fifteen days at the Court house door and two other public places in Covington, at Marions Depot, Petersburg, Mount Zion, Randolph and Bloomington and at Strains mill and the Mills on the Stone & Calhoun place and at Malones mill and that the clerk report to the next term of this Court - - -

Notice
made

W A Garbrok et al

vs
Joseph M Garbro et al

Petition to sell land for
Division

Be it remembered
that on this the 14

day of December 1864 this cause came on for hearing before the Worshipful County Court of Tipton County upon the petition, answers of defendants, report of

1850 TENNESSEE CENSUS

McGUIER, Skilline 40, Nancy 46, Robert HOPKINS 70, Va Va, Ha-510-122

McGUIER, Wm. 60, Ann 50, Lucinda 16, Matilda 1, T T, Su-1674-255

McGUIRE, Addison 24, Sarah 30, Emily 26, NC NC, T-151-639

McGUIRE, Alfred 36, Louisa 30, John A. 6, Narcissa M. 5, Ann E. 2, Sarah T. 1/12, NC T, T-370-668

McGUIRE, C. W. 49, Sarah 45, Elizabeth 25, Calvin 19, John 17, Robert 13, Cornelius 11, Mary 9, George W. 7, Narcissa 4, Docia 2, Jane MULANA 72, John DICKEY 23, T SC, LI-906-344

McGUIRE, Cammell 58, Rebecca 57, Ky Ky, Hr-598-219

McGUIRE, Chares? G. 27, Mary T. 24, Chares 73, Morning TAYLOR 45, Mary BROWN 8, Joseph McGUIRE 5, Alvira 2, T T, Wh-1142-169

McGUIRE, Cornelius 53, Jane 60, Samuel D. 23, Sarah C. 20, Lorenza D. VAUGHAN 14, Ky SC, W-1266-186

McGUIRE, Edward 34, Sarah 29, Edward 3, Pa NY, D-494-601

McGUIRE, Elijah 27, Eliza 29, Sarah 5, Rebecca J. 3, Toliver S. 6/12, John M. SEXTON 2, T T, R-554-621

McGUIRE, George 50, Rachael 27, Cornelius 16, John 14, Mary 8, Charles 6, Jane 4, Daniel 3/12, Nancy 3/12, T T, H-8-738

McGUIRE, Henry 27, Nancy 25, Archy 7, Berry 5, Amy 3, Fanny 1, T T, Bo-280-40

McGUIRE, Henry 60, Ruth 40, Miram 20, William 18, Mary 7, Saml. DICKSON 49, T T, Mc-2010-732

McGUIRE, J. M. 25, Jane 24, James 8, Nancy 5, Mary 2, Carey 4/12, Va T, He-27-222

McGUIRE, James 32, Margaret 25, Robert 11/12, T T, Mo-192-28

McGUIRE, James 50, Polly 40, Polly 25, Charlotte 16, Josiah 14, Lucinda 12, Horace 11, John 5, Ebenezar 26, Amanda 19, Va Ky, Dk-997-140

McGUIRE, James 32, Elizabeth 26, Thomas 4, no name 2, James 7/12, Mary ADAMS 12, Ky T, Hr-276-175

McGUIRE, James 24, Nancy 29, John 2, T T, H-719-839

McGUIRE, James 64, Rachel 55, Elizabeth 38, Jane 30, Rebecca 28, William 18, Saml. 15, Va Va, Wi-622-565

McGUIRE, Jane 56, Robert A. 22, Malinda 18, Cynthia 11, Abigal 9, T T, Br-1215-450

McGUIRE, Jesse 23, Mary 26, Simeon 8, John 5, Lewis M. 3, Mary A. 4/12, Ky T, Wh-641-99

McGUIRE, Jesse 65, Mary 63, Lucy 22, Nancy 19, Va T, V-53-740

McGUIRE, John 38, Mary 32, John 6, Louisa 4, Martha 6/12, NC? NC?, Sn-17-593

McGUIRE, John 35, Rachiel 35, Jesse C. 15, Samuel T. 13, Wm. J. 11, Mary Jane 9, John P. 7, Nancy K. 5, James A. 3, Lucinda 7/12, T T, V-48-740

McGUIRE, John 59, Sarah 54, Lucinda 25, Mary 23, Louisa 20, Sarah 18, NC NC, Rb-589-6

McGUIRE, John 29, Catharine 34, Micheal A. 3, T T, Je-601-740

McGUIRE, John B. 49, Nancy 48, John 14, James 12, Rebecca 9, Jonas 8, Dovy 5, Lucinda 2, T T, He-30-222

McGUIRE, John W. 26, Permelia 26, Orvil 1, T T, J-980-612

McGUIRE, John Y. 35, Harriette 23, Robert 3, Sarah 2, John 7/12, Ky NC, Hr-673-229

McGUIRE, Joseph 31, Rutha 26, William 8, James 6, Robert 4, John 1, T T, Mo-446-66

McGUIRE, Josiah 54, Sarah 50, Eli 29, Stephen 22, Julian 20, Nicholas 18, Madison 16, Jerry 15, William 13, John 11, T T, Mo-191-28

McGUIRE, Josiah 23, Elizabeth 18, T T, Mo-193-28

McGUIRE, Josiah 41, Nancy 39, Robert 21, Joseph 18, James 16, Samuel 12, William 7, John 5, Thomas 11/12, Va T, Cf-652-94

McGUIRE, Michael 26, Lucinda 21, William 3, Josiah 1, John 2/12, T T, Mo-194-28

McGUIRE, Michael 36, Malinda 32, Sarah E. 10, Columbus 8, Jane 6, Charity 4, Prudencia 1, NC NC, Gr-566-77

McGUIRE, Michal 26, Sarah 35, James K. P. 5, Thomas 4, Hugh L. 2, T Va, Mc-2011-732

McGUIRE, Obadiah 29, Eliza E. 20, Benj. F. SMITH 35, Susan WHITSON 9, NC T, T-113-634

McGUIRE, Patric 49, Grizza A. 45, Susan 30, Kesannah 14, Robert C. 12, Elizabeth CAIN 20, Grizza McGUIRE 3, T T, Cr-2004-299

McGUIRE, Patrick 26, Martha A. 22, T T, Je-498-725

McGUIRE, Patrick 29, Sarah 27, Elizabeth 2, Margaret Ann 6/12, T T, Je-600-739

McGUIRE, Patrick 75, Martha 55, Susan 21, C. P. 19,

N. C. 17, F. M. LOONEY 12, Ireland Ky, Mu-301-349

McGUIRE, R. B. 30, Lucinda 25, Vanburen 8, Joseph 1, T NC, We-80-779

McGUIRE, Robert 41, Elizabeth 41, America F. 18, William F. 15, Jane D. 13, Mary C. 6, Susan MYERS 20, NC NC, T-369-668

McGUIRE, Thomas 35, Polly 29, Anise 11, Eli 10, James 8, William 6, Sarah 3, Elizabeth 1, NC NC, Mo-480-70

McGUIRE, Thomas 65, Nancy 58, Henry 31, Thomas 24, Eli 23, Polly 20, Emmy 18, Jackson 17, Nancy 15, Charity 13, Md NC, Mo-433-64

McGUIRE, Thomas A. 21, Martha 19, Silas 27, T T, W-1267-186

McGUIRE, Thomas M. 38, Martha 32, George 22, T T, Wi-501-327

McGUIRE, William 65, Frances 57, Eliza 24, Manerva 20, Washington 17, NC NC, T-264-655

McGUIRE, Wm. 30, Charles P. 9, T T, V-52-740

McGUIRE, William 34, Jane 38, Eli 8, Henry 6, Sarah 4, Joseph 2, Mary A. 7/12, T T, Mc-706-544

McGUIRE, William 24, Amanda 23, Lydia 5, John W. 3, Sarah 10/12, Lyla L. 10/12, T T, Li-875-339

McGUYRE, John 49, Mary 43, Humphress P. 13, Mary E. 22, Sarah Ann 21, Norma 20, Virginia 20, James A. 18, Maldica Z. 17, William B. 16, Catharine 14, Ritte M. 12, Nancy Z. 11, Andrew Jackson 8, Thomas Polk 6, Cornelius 4, John 2, Archibald ZETT 1/12, Ky T, B-105-207

McGWIRE, Martha 50, Monroe 14, T Ky, We-83-780

McGWYRE, Cornelius B. 27, Mary 26, Thos. R. 2, Sarah G. 1, T T, B-165-216

McGWYRE, Thos. 69, Ann 60, Canada T, B-166-216

TIPTON COUNTY, TN - 1850 CENSUS

#79 - Farmer - \$800 - 31 Aug.

Rufus Myers	27	M	KY
Frances McGuire	35	F	KY
Margaret E.	15	F	TN
Henry H	13	M	TN
William M.	11	M	TN
Gerusha R.	9	F	TN
Sara M.	6	F	TN

#93 - Farmer - \$400 - 2 Sept.

William R. Whitlock	23	M	TN
Evalina	16	F	NC

#113 - Farmer - 3 Sept.

Obadiah McGuire	29	M	NC
Eliza E.	20	F	TN
Benj. T. Smith	35	M	TN
Susan Whitson	9	F	TN

#116 - Farmer - \$3000 - 3 Sept.

Anderson C. Yarbrough	39	M	NC
Mary	45	F	NC
Elizabeth	20	F	TN
Meredith	19	M	TN
Uriah	18	M	TN
Emeline	17	F	TN
Elias	15	M	TN
Catherine	12	F	TN
Edward	9	M	TN
Sarah	7	F	TN
James	5	M	TN
Joseph	4	M	TN
Caroline	2	F	TN

#151 - Farmer - \$380 - 6 Sept.

Addison McGuire	24	M	NC
Sarah	30	F	NC
Emily	26	F	NC

#154-Farmer - \$700 - 6 Sept.

William Kinney	30	M	NC
Ellen	27	F	NC
Manuel	7	M	TN
Isaac	4	M	TN
George L.	1	M	TN

#157 - Farmer - \$700 - 6 Sept.

Thomas Kinney	35	M	NC
Albertann	24	F	NC
John D.	3	M	TN
Mary E	2	F	TN

#162 - Farmer - \$1000 - 6 Sept.

Edward Yarbrough	45	M	NC
Jane P.	42	F	TN
William J.	18	M	TN
Edmond T.	15	M	TN
John A.	11	M	TN
Nancy J.	9	F	TN
Harriett	6	F	TN
Charles	4	M	TN

#264 - Farmer - \$4750 - 16 Sept.

William McGuire	65	M	NC
Frances	59	F	NC
Eliza	24	F	TN
Manerva	20	F	TN
Washington	17	M	TN

#268 - Farmer - 16 Sept.

John A. Kulbreath	46	M	NC
Julia	39	F	IL
Louisa	21	F	IL
Mary	19	F	IL
Roanna	17	F	IL
Christopher	15	M	IL
Sareany	12	F	IL
Caroline	8	F	TN
Elizabeth	7	F	TN
William	6	M	TN
Malinda	2	F	TN

#318 - Farmer - \$1120 - 18 Sept.

William Yarbro	30	M	NC
Susan	30	F	VA
Laura G.	4	F	TN
Marshall N.	2	M	TN

#369 - Farmer - \$300 - 23 Sept.

Robert McGuire	41	M	NC
Elizabeth	41	M	NC
America	18	F	TN
William F.	15	M	TN
Jane D.	13	F	TN
Mary C.	6	F	TN
Susan Myers	20	F	TN

#370 - Farmer - 23 Sept.

Alfred McGuire	36	M	NC
Louisa	30	F	TN
John A.	6	M	TN
Narcissa M.	5	F	TN
Ann E.	2	F	TN
Sarah F.	1/2	F	TN

TIPTON COUNTY, TN - 1850 Census

#374 - Farmer - \$1000 - 23 Sept.

L. B. Yarbrow	23	M	TN
Susan	22	F	TN
Rosby	1	F	TN

#378 - Farmer - \$1000 - 23 Sept.

B. R. Whitlock	47	M	VA
Nancy	44	F	KY
John F.	18	M	TN
George W	16	M	TN
Eliza Goforth	15	F	TN
James H. Whitlock	14	M	TN
Susan V.	12	F	TN
Martha	9	F	TN
Mary	8	F	TN
Hill	2/12	M	TN
S. Goforth	22	M	TN

#422 - Doctor - \$3120 - 26 Sept.

William A. Bowers	47	M	NC
Catharine	45	F	NC
Eliza J.	19	F	TN
William F.	14	M	TN
Henry Clay	9	M	TN
Catharine	6	F	TN
Calvin A.	3	M	TN
Washington H.	2	M	TN
Alex YARBRO	84	M	NC

#546 - Farmer - \$500 - 7 Oct.

David Yarbrow	47	M	NC
Susan	48	F	NC
Henry W.	23	M	NC
Margaret	19	F	NC
Safrona E.	14	F	TN
Aaron A.	12	M	TN
Samuel M.	10	M	TN
Andrew J.	8	M	TN

#640 - Farmer - \$1000 - 18 Oct.

Thomas Yarbrow	43	M	NC
Sarah	44	F	NC
John S.	19	M	NC
Thomas J.	17	M	NC
James T.	15	M	NC
Safroney E.	14	F	NC
Washington G	13	M	NC
Margaret	11	F	TN
Martha J.	10	F	TN
Andrew J.	7	M	TN
Isaac N.	6	M	TN
William A	4	M	TN
Sarah E.	2	F	TN

1860 TENNESSEE CENSUS

- *McGUIRE, Emily 28, Fanny 17, Sn-156-237
- McGUIRE, Alfred 16, Louiza J. 39, John A. 17, Narcissa 15, Ann E. 12, Sarah F. 10, Nepoli-
dan F. 6, Isabella W. 4, Louiza J. 2, T-10-
417
- *McGUIRE, Ama 80, Thomas 6, Wa-88-78
- *McGUIRE, Ann 72, Sh-141-233
- *McGUIRE, Benj. 27, B-50
- *McGUIRE, Cally 51, Jesse 15, Thos. J. 13, Cathar-
ine 17, V-20-10
- McGUIRE, E. D. 62 (m), G. A. P. GRIFFETH 9 (m),
W-116-58
- *McGUIRE, Ed 26, Sh-96-48
- McGUIRE, Edward 26, Mary 9, John 6/12, James M.
COLT 24, Pat FAREN 23, D-93
- McGUIRE, Eli 40, Rebecca 31, M. J. 7 (m), S. H.
5 (m), W. A. 1 (f), Mo-9-194
- McGUIRE, Elizabeth 26, A. 6 (m), James 2, H-66-137
- McGUIRE, Elizabeth 51, Sarah L. 15, T-20-353
- McGUIRE, F. 29 (m), Sh-138-147
- McGUIRE, F. 27 (m), Mt-60-468
- McGUIRE, Frances 45, Margaret E. 25, Henry X. 23,
Wm. W. 20, Germsa? R. 19 (f), Sarah 15, T-
3-414
- McGUIRE, G. W. 43 (m), Martha 27, infant 1 (m),
Ma-69-96
- McGUIRE, G. W. 50 (m), Rachael 40, Jackson 22,
James 18, Charles 16, Mary 14, Daniel 12,
Wealthy 11, Sarah 10, Reubin 4, Mina? 2,
H-252-10
- McGUIRE, George 36, Mary 37, Elizabeth 16, Andrew
13, Celia 12, Nancy 6, William 1, Jo-56-24
- McGUIRE, H. M. 35 (m), H. J. 21 (f), C. J. L. 2
(m), M-116-58
- McGUIRE, Henry 74, Ruth 74, Miriam 34, Wm. H. 27,
Mary A. DIXON 17, Mc-76-242
- *McGUIRE, Hugh 25, Sh-134-145
- McGUIRE, J. P. 27 (m), R. J. 18 (f), C. B. 29 (m),
J. W. HOLLAND 21 (m), Bud POLLY 19, Li-89-126
- McGUIRE, J. S. 24 (m), Sarah 16, William PEEBLES
17, Li-88-125
- McGUIRE, J. W. 40 (m), C. C. 39 (f), Ellen P. 15,
W. J. 11 (m), John A. 6, Charles A. 2, Mn-
312-497
- *McGUIRE, Jack 23, H-134-132
- *McGUIRE, James 19, Hu-185-188
- McGUIRE, James 43, Elizabeth 38, Thos. C. 13,
Candes T. 11, Bettie J. 7, Rebecca E. 5,
Martha ADAMS 61, Hr-38-167
- *McGUIRE, James 24, Mary A. 26, Hy-95-419
- McGUIRE, James 60, Mary 50, Lucinda 19, Horace 18,
John 15, Harriet 9, Dk-131-146
- McGUIRE, Jas. 45, Margaret 35, Robt. 11, Sarah 8,
Mo-240-309
- *McGUIRE, Jas. A. 18, Margret A. 9, Sh-136-146
- *McGUIRE, Miss Jane 35, Mt-48-377
- McGUIRE, Jerry 22, Elizabeth 22, Josiah 2, Mo-31-
205
- McGUIRE, Jesse 35, Martha 27, John 15, Marion 18,
Tobitha 1, Wh-99-45
- McGUIRE, John 46, Amillia 44, Charity E. 22, Mary
E. 19, Joseph 15, James M. 10, Martha E. 12,
Julia A. 7, Jo-161-58
- McGUIRE, John 38, Joshua 12, Ida 10, Lucinde ECH-
ART 57, K-95-99
- McGUIRE, John 38, Catharine 42, M. A. 13 (m), G.
H. 3 (m), John CURETON 18, K. E. TILLET 23
(f), Je-40-348
- *McGUIRE, John 28, Sh-55-28
- McGUIRE, Jos. 51, Nancy 50, William 17, John 14,
Thomas 11, May Ann 29, Eliza A. 11, John 9,
Josiah 4, Silas 1, Cf-87-43
- McGUIRE, Joseph 36, Lydia 32, Mary A. 10, Michael
L. 9, Henry J. 6, John M. 5, Thos. M. H. 2,
Miriam C. 4/12, Mc-90-249
- McGUIRE, Josiah 60, Mo-16-197
- McGUIRE, L. H. 24 (m), Julian 24, Jephtha 6, Josiah
4, John 3, Louisa 7/12, Sm-106-338
- McGUIRE, Madison 25, Martha 24, James 1, Mo-246-312
- *McGUIRE, Malinda 50, H-65-137
- *McGUIRE, Mary 40, Sh-1-88
- *McGUIRE, Mary 37, Sh-15-69
- McGUIRE, Michael 45, Malinda 42, Sarah E. 19, Col-
umbus 17, Elisa 16, Charity 13, Michael L.
8, Mary L. 5, Malissa 3, Gr-75-440
- McGUIRE, Mike 50, Elizabeth 30, Mary 14, John 12,
Elizabeth 8, Christy 4, Nancy 2, Hu-69-140
- *McGUIRE, Mike 37, Mt-34-455
- *McGUIRE, N. 17 (m), Ru-75-38
- McGUIRE, N. K. 26 (m), Mary C. 22, Mu-54-384
- *McGUIRE, Nancy 26, Malissa A. 7, Mary E. 4, Martha
D. 1, V-3-2
- McGUIRE, Obe 39, Liza E. 27, T-2-358
- McGUIRE, P. J. 40 (m), Sarah 34, E. J. 13 (f),
Margaret 12, Joseph 8, Saml. 7, Lou 6 (f),
M. 4 (f), James 3, Thos. 1, Amanda LYLE 17,
Samuel 20, Je-39-348
- *McGUIRE, Pat 25, Hu-179-185
- McGUIRE, Pat 36, Amy 31, Pat 8, Marsallie 4, Ros-
ean 1, D-101
- *McGUIRE, Pat 20, St-83-464
- *McGUIRE, Pat 27, Sh-57-29
- McGUIRE, Patric 32, Miney 35, Mary 11, Anna 8,
Thomas 5, James 5/12, James WHITE 29, Mary
20, John 1/12, D-100
- McGUIRE, Patrick 36, Martha A. 32, Thomas L. 9,
Harriet L. 7, Annice C. 5, Marshall F. 3,
Harry L. 10/12, Je-17-337
- *McGUIRE, Perry 20, Ma-64-93
- *McGUIRE, Phil 22, Sh-88-44
- McGUIRE, Philip 40, Elizabeth SMITH 22, Thomas
MYERS 40, Patrick SMITH 22, D-64-455
- *McGUIRE, Phillip 60, Ma-145-134
- McGUIRE, R. B. 36 (m), Lucinda 36, Felix G. 19,
Joseph A. 18, Albert M. 8, Daniel M. 3,
Rachel 5/12, We-186-318
- McGUIRE, R. R. 23 (m), Ann 18, Ada 4/12, Li-88-125
- McGUIRE, Rebecca 66, Hr-38-167
- McGUIRE, Robert 30, Hanna H. 21, William 3, Thomas
1, Cf-88-43
- *McGUIRE, Robert 13, Narcissa 11, John W. 10, Hr-
32-164
- McGUIRE, Robert 53, Mary 50, John 18, Jane 16,
Fredric 12, Robert 8, Nancy 6, Ellen 24, St-
63-454
- McGUIRE, S. M. 31 (m), Harriet 61, Eliza C. 30,
Mariah A. 28, Rachael 26, Emily I. 24, Sarah
18, Thos. CARMICHAEL 15, Je-36-346
- *McGUIRE, Sarah 47, T-7-365
- *McGUIRE, Sarah 50, Stephen 30, Nickolas 24, John
21, Mo-248-313
- McGUIRE, T. J. 25 (m), Ann 24, Josephine 11, Nancy
9, America 6, Pu-132-50
- McGUIRE, Thos. A. 35, E. Isabel 27, Harriet J. 2,
Cordelia E. 9/12, Je-19-338
- McGUIRE, W. H. 34 (m), Amanda 33, Lucinda 14,
John 12, Sarah 10, Lyia(sic) 10, Elin 8,
Mary 4, Orlessa 9/12, Smith KETON 16, Li-86-
166
- McGUIRE, Wm. 75, Frances 68, Anderson 41, T-12-418
- McGUIRE, William 40, Charles T. 18, V-52-26
- McGUIRE, Wm. 28, Mary 24, Lewis 4, Sh-122-223
- McGUIRE, Wm. 23, M. A. 22 (f), Mo-11-195
- McGUIRE, William T. 24, Sarah 21, Mary J. 1, Mary
LEARCY 12, T-19-353
- McGUYER, James W. 33, Nancy 38, John H. 12, Mary
10, Robert J. 8, William M. 5, James W. 2,
R-20-517
- McGUYRE, Holaday 66, Jan 58, Mn-219-463
- *McGUYRE, James 23, Ru-50-145
- McGUYRE, Jo 28, Nancy 18, John 3, M. J. 2 (f),
Ru-49-145
- McGUYRE, Martin 46, James 50, Martin 26, Martin
21, Frank 21, James 19, Edward 19, Martin
18, Martin 16, Kate 16, Mary 16, James 14,
Peter 12, Peter 11, Henry 7, Briget 5, Jane
4, Mary 2, Rose 6/12, Elizabeth 40, Jane 33,
St-66-455
- *McGUYRE, William 24, Mn-172-439
- *McGWIRE, Charles 26, B-138
- McGWIRE, James 78, R. 78 (f), E. LEATHE 68 (f),
Jane McGWIRE 48, R. 38 (f), W. A. (McGUYRE)
36 (m), S. B. 27 (m), Sallie LEATHERS 23,
Wi-101-231
- *McGWIRE, Jas. 11, Br-94

TENNESSEE 1870 - KEY TO COUNTY SYMBOLS

A	Anderson	Ha	Hancock	Moo	Moore
B	Bedford	Hr	Hardeman	Mg	Morgan
Be	Benton	Hd	Hardin	O	Obion
Bl	Bledsoe	Hm	Hamblen	Ov	Overton
Bo	Blount	Hw	Hawkins	P	Perry
Br	Bradley	Hy	Haywood	Pi	Pickett
C	Campbell	He	Henderson	Po	Polk
Ca	Cannon	Hn	Henry	Pu	Putnam
Cr	Carroll	Hi	Hickman	R	Rhea
Ct	Carter	Ho	Houston	Ro	Roane
Ce	Cheatham	Hu	Humphreys	Rb	Robertson
Ch	Chester	J	Jackson	Ru	Rutherford
Cl	Claiborne	Ja	James*	S	Scott
Cy	Clay	Je	Jefferson	Se	Sevier
Co	Cocke	Jo	Johnson	Dq	Sequatchie
Cf	Coffee	K	Knox	Sh	Shelby
Cc	Crockett	L	Lauderdale	Sm	Smith
Cu	Cumberland	La	Lawrence	St	Stewart
D	Davidson	Le	Lewis	Su	Sullivan
De	Decatur	Lk	Lake	Sn	Sumner
Dk	DeKalb	Li	Lincoln	T	Tipton
Di	Dickson	Lo	Loudon	Tr	Trousdale
Dy	Dyer	M	Macon	U	Unicoi
F	Fayette	Ma	Madison	Un	Union
Fe	Fentress	Mr	Marion	V	Van Buren
Fr	Franklin	Ms	Marshall	W	Warren
G	Gibson	Mu	Maury	Wa	Washington
Gi	Giles	Mc	McMinn	Wy	Wayne
Gr	Grainger	Mn	McNairy	We	Weakley
Ge	Greene	Me	Meigs	Wh	White
Gu	Grundy	Mo	Monroe	Wi	Williamson
H	Hamilton	Mt	Montgomery	Wl	Wilson

*James Co. does not appear on modern maps. This county was formed out of part of Hamilton Co. in 1870, and was reunited with Hamilton in 1919.

INDEX TO 1870 TENNESSEE CENSUS

McGuire, Alfred 56 T-177
 Anderson 51 T-21
 Bettie 70 B GI-179
 C. 27 GR-63
 C. 49 B D3-180
 C. B. 39 LI-396
 Ed 30 SH-M67
 Edward 27 HU-103
 Eglantine 31 JE-358
 Eligah 43 H-614
 Elizabeth 45 HU-97
 Ely 53 MC-1
 Francis 56 T-183
 G. W. 53 MA-126
 Geo. 35 SH-M226
 George 3 B F-215
 H. 54 B HR-152
 Harriet 70 JE-358
 Harry 30 B T-20
 Henry 91 MC-55
 Homer 34 D1-353
 J. P. 37 GI-133
 J. S. 32 LI-395
 J. W. 37 WI-214
 James 36 CF-62
 James 40 SH-M36
 James 53 HR-137
 James 53 MO-29
 James 88 WI-214
 Jane 40 B D3-219
 Jane 40 HU-96
 Jerrie 33 MO-32
 Jerry 43 B MU-367
 John 21 GI-397
 John 48 JE-355
 Josephine 20 W-57
 Josiah 61 CF-70
 Lizza 34 B D1-240
 Lucinda 35 B F-220
 Lula 21 SH-M245
 Luticia 34 MC-20

McGuire, M. P. 53 DC-227
 Malinda 59 H-641
 Martha 18 LA-12
 Martha 57 H-622
 Martha A. 42 JE-357
 Marvin 28 B DI-239
 Mary 34 C-29
 Mary 36 G-438
 Mary 48 SH-M268
 Mary 52 SH-M137
 Michael 55 JE-463
 Michael A. 23 JE-374
 Moses 33 V-309
 N. 39 MO-32
 Obedia 50 T-41
 Paralee 20 B D3-240
 Patrick 51 JE-374
 Peter 27 SH-300
 Phill 50 D-390
 R. R. 33 LI-395
 Riley 59 B DI-487
 Rutha 43 B RO-381
 Sallie 38 RB-137
 Sallie 65 LI-395
 Saml. 35 LK-485
 Silas M. 42 JE-358
 Smith 33 B RB-137
 Stephen 40 MO-1
 Susie 70 B D3-296
 Thomas 17 WA-311
 Thos. 27 G-240
 W. 34 B HR-137
 W. J. 25 PU-222
 W. M. 7 WE-2
 Wainright 19 J-152
 William 32 MO-1
 William 62 B-370
 William J. 34 CU-168
 Wm. 52 RB-21
 McGuiree, Thomas 40 B GI-39
 MCGuyer, James 53 L-566

TIPTON COUNTY, TN MARRIAGE BOOK B 1840-1860

McGuire, A. (JP) 110

Alfred 12

America F. 140

Emily 93

Jerusha Ann Jane 125

Morrison Jane 77

O. (JP) 54-60-69-79-80-87-89-92-103-104-128-136-139

O. M. (JP) 94-140

Obadiah 38

Susan 36

William F. 129

TIPTON COUNTY, TN - MARRIAGES - 1840 to 1860 by Tony Hays

Alfred McGuire to Louisa J. Hartsfield - 15 Feb. 1842

Obadiah McGuire to Eliza Whitson - 13 Aug. 1846

Minerva Jane McGuire to Robert W. Smith - 28 Jan. 1852

Susan McGuire to Landon Bradford Yarbrough - 13 March 1853

Emily McGuire to Alex Fridle - 18 May 1854

William McGuire to Sarah M. Stephens 7 Apr. 1855

Jerusha Ann Jane McGuire to Milton A. Coutts - 10 Nov. 1857

America F. McGuire to W. Wilkins - 4 May 1859

Minerva Jane McGuire was the daughter of William McGuire and Frances Strange.
Robert Smith was the son of Obedience Yarbrough (dau. of Henry Yarbrough and
Bridget Davis) and John Smith.

Alex (Fridle) Freedle was the son of Elizabeth Yarbrough (the dau. of Henry
Yarbrough and Bridget Davis) and Willis Freedle.

Emily McGuire was the daughter of Henry McGuire (the brother of William) and
Margaret Strange (the sister of Frances)

Susan McGuire was the daughter of William McGuire and Frances Strange.

Landon Bradford Yarbrough was the son of Edward Yarbrough and Jane Kulbreath.

TENNESSEE MORTALITY SCHEDULE - 1850-1860-1870-1880

McGuire, C. W. 18 (m), M, MS, Sep, farmer, palsey, Li-60
McGuire, Elizabeth 18, TN TN VA, domestic serv. Apr, pully consumption, A-80
McGuire, James 2/12, TN, Aug. Chron. Diaf.?, Sh-50
McGuire, James 4, TN, Sep, scarlet fever, Mo-60
McGuire, Jennie 39, M, TN, Apr, consumption, D-80
McGuire, John 4, Ire, Aug, chron. diaf.?, Sh-50
McGuire, John P. 1, TN, Jul 1, inflammation, Li-80
McGuire, Lettie 1, TN, Nov, croup, Li-60
McGuire, Martha 7/30, TN, Jul, premature birth, K-80
McGuire, Mary 26, TN, Aug, ty. fever, Wi-50
McGuire, Mary 7/30, TN, Jul, premature birth, K-80
McGuire, Racheal 40, M, TN, Apr, phthisis pulmonatis, D-80
McGuire, Robert 52, NC, May, farmer, sucide by hanging self, T-60
McGuire, Sarah 22, M, TN, Apr, consumption, Wh-50
McGuire, Thomas 3, GA, Nov, burnt, H-60
McGuire, W. P. 1(m), TN, Jan, burn, Li-60
McGuire, William 1, TN, Aug, pneumonia, Li-60

TIPTON COUNTY, TN

MINUTE BOOK A - Oct. 1823-Sept. 1830

McGUIRE, WILLIAM - 57-66-67-70-73-74-78-82-85-105-114-123-126-128-136-139-
166-167-180-191-193-194-195-197-198-222-225-237-240-244-249-267-295-318-
332-333-337-338-339-340-341-344-345-346-347-348-349-350-352-357

MINUTE BOOK B - March 1831-Dec. 1833

McGUIRE, William - 10-20-39-42-50-52-58-141-173-320-371

MINUTE BOOK C - March 1834-Dec. 1845

McGUIRE, Robert - 18-50-69-84-85-87

McGUIRE, William - - 17-80-104-109-112-117-118-119-153-154

A

E

Page 1

McLennan John, VS. C. C. Freeman	18
McNair Daniel Admr. Appointed	27-318.
McQuiston William W. Idn.	53
McFadden James F. VS. Granville M. Fagan & Wife Ann M. Fagan et al	68-116
McGuire Adinoh J. Heirs Petition to sell land	74-209
McGuire William, Ship	79
McCam James M. Probate of Will	104
McClarkin John M. Trustee Bond	109-551-682.
McBride William R. Heirs Petition to divide land	156
McDonald James H. Idn. Appointed	207
McDonald A. C. Probate of Will	208
McClarkin J. M. Trustee Elected	224
McGuire Robert Admr. Appointed	256
McGuire Sarah Admr	276
McCain William Rob. Probate of Will	328
McCloughland Andrew J. Idn. Appointed	354
McCain William R. Probate of Will	357-360.
McNair Jno. Hay et al VS. Elizabeth McNair Petition to divide land	419.
McNair Elizabeth et al, Petition for Dower & Division	423
McCain John G. Idn. Settlement recorded	437
McFadden J. F. Probate of Will	482
Myers D. M. Admr. Appointed	484
McCain Alex L. Admr. VS. Martha Strong, et al. Petition for Division	505-507.
McCullough James Admr. Appointed	520-
McFadden James Executor "	527-
McCreight S. H. Probate of Will	548-568.
McQuiston James A. et al, Idn. Appointed	597.
McMurtry Sam J. Admr. "	605-702-756.
McQuiston N. C. "	607
McLamrock A. "	624
McLaughlin Robert, Idn. "	628
McCreight Jno. R. Admr "	632
McGuire William, "	673

"Mc" INDEX

NORTH MINUTE BOOK "F"

Kathleen Vaughn

Caddo / Cheyenne

Caddo Tribal Office

POB 465

Binger Ok 73009

Okla

~~7188~~
(405)

656-2344 ?

San Diego

Phil

Mower flips over, kills Denmark man

SEARCY — Calvin Jerrell "Tuffy" Yarbrough, 65, of Denmark (White County) died about 3 p.m. Tuesday after his riding mower apparently overturned on an embankment and pinned him against a boat, White County Coroner Mike Hancock said Wednesday.

Yarbrough died of chest and head injuries, Hancock said.

Yarbrough, a former car dealer, was pastor of Baptist Tabernacle at Searcy.



Sept. 28 th - 1993

THE DAILY CITIZEN - Searcy, Ark. - Thursday, September 30, 1993

Man dies when lawn mower overturns and pins him against boat

By GINA BLOCK
Staff Writer

A Denmark man was pronounced dead Tuesday night after an accident involving a riding lawn mower, said Lieutenant Glen Gordon, public information officer for the White County Sheriff's Department.

Calvin Jerrell "Tuffy" Yarbrough, 65, of Denmark was killed after his mower apparently overturned and pinned him against an aluminum boat near a pond on Jerry Smith Road.

A neighbor, Jerry Smith of

Bradford, told officers that Yarbrough's wife had called him around 9:30 to ask him to go look for her husband who hadn't returned home from mowing the hillside near the pond. Smith said he lifted the mower from Yarbrough's body and called 911.

White County Coroner Mike Hancock pronounced Yarbrough dead at the scene.

Yarbrough was pastor at Baptist Tabernacle in Searcy.

Funeral arrangements are incomplete at this time and will be announced later by Roller-Daniel Funeral Home in Searcy.

THURSDAY, SEPTEMBER 30, 1993

Calvin Jerrell Yarbrough

The Rev. Calvin Jerrell "Tuffy" Yarbrough, 65, of Bradford died Tuesday, September 28. Born March 14, 1928, in Crosby, he was the son of Charlie Levi Yarbrough and Flossie Irene Harrison Yarbrough.

The Rev. Yarbrough led in the organization of the Baptist Tabernacle Church in 1975 and has pastored and was a member there until his death. He also owned and operated Yarbrough Motors in Searcy for many years. He was a Navy veteran of World War II.

Survivors include his wife, Leoda Yarbrough; two sons, Jerry Yarbrough of New Braunfels, Texas, and Rodney Yarbrough of Houston; three daughters, Danna Corbitt of Memphis, Miranda Rollins of Olive Branch, Mississippi, and Angela Yarbrough of Searcy; three brothers, V.J. Yarbrough and Charles Yarbrough, both of Searcy, and Phil Yarbrough of Memphis; three sisters, Mildred Fisher and Oleta Yarbrough, both of North Little Rock, and Laverne Brown of Searcy; eight grandchildren and two great-grandchildren.

Funeral services will be conducted Friday, October 1, at 10 a.m. at Roller-Daniel Chapel. Burial will be in Gum Springs Cemetery by Roller-Daniel Funeral Home. Memorials may be made to the Baptist Tabernacle Church in Searcy.



C. J. YARBROUGH

Mayor's office sought

C. J. "Tuffy" Yarbrough, 49, Searcy automobile dealer and native of White County today announced his candidacy for the Democratic nomination for Mayor of Searcy in this summer's primaries.

In making his announcement, Yarbrough said, "I want to make it clear that I am not running against anyone. I am running for the office because I believe I can serve the people of Searcy. I feel that the people of the city have been good to me during the 25 years I have been in business here and I want to offer my services for this office."

Yarbrough is a charter member and pastor of Baptist Tabernacle in Searcy and a charter member of the Searcy Optimist Club.

Most of his activities over the years have been devoted to working with rural churches in the area.

Yarbrough is a veteran of World War II and a member of the Veterans of Foreign Wars. He is married and the father of two sons and a daughter. The family resides at 1000 North Ella Street.



June 1979
BIGGEST FAMILY — Mr. and Mrs. Douglas Corbitt of Kingwood Addition, had the largest family represented at the "Family" celebration Sunday at Tabernacle Baptist Church. Mrs. Corbitt, the former Danna Yarbrough, is the daughter of Rev. C. J. "Tuffy" Yarbrough, pastor of the church. Mrs. Corbitt had 17 members of her family present.

Searching for Indexed Terms¹

First, find the name or phrase (search term) in the index. Then, from the menu bar, select “Edit”, and then “Find” or press CTRL+F. A search field will appear in the upper right corner of the page. Enter the search term into this field and press ENTER. If the search term is not found, nothing will happen; otherwise, the search term will be displayed on the first page in which it occurs. Repeated pressing of the ENTER key will high-light other occurrences within the file. Use the left and right arrow buttons to the right of the search field to look ahead or to look backwards for other occurrences of the term in the document

A directory (folder) or even an entire hard drive may also be searched². First, high-light the selected folder or drive and then press SHIFT+CTRL+F to obtain a listing of all the files in which the search term appears. Next, select and open an individual file to find the first occurrence of the search term(s) in the file, as described in the preceding paragraph.

Index

B	Jones, Queen Isabel , 31, 33, 41
Bowers, William A , 93	L
C	Lester, James , 30
Coe, Jim , 36, 37	Loravaset, Willie , 79
E	M
Evans, Zelma Dean (Ruby) , 30	McGuire , 94
G	ohn, 96
Gentry, Robert Cornelius , 22	McGuire, Alfred , 76
Griffith, Sarah Eliza , 76	McGuire, Anderson , 74
H	McGuire, Emily , 97
Hart, Rosie , 28, 29	McGuire, Henry , 74
Holt, William , 80	McGuire, James , 96
J	McGuire, John , 78
	McGuire, Mary , 94
	McGuire, Michael , 91, 94, 96
	McGuire, Mike , 94
	McGuire, Minerva Jane , 97
	McGuire, Narcissa , 91, 92, 94
	McGuire, Obadiah , 76, 92, 97
	McGuire, Pat , 94

¹ In order for the search feature of Adobe Acrobat® Reader to be enabled, a certain level of document legibility is required. That is, post-scanning processing cannot overcome poor print quality of an original document. With this caveat, each volume has been made searchable by Adobe Acrobat, version 9 or later.

² This may take quite some time, depending on the size of files contained therein.

McGuire, Perry, 94, 95
 McGuire, Polly, 91
 McGuire, Rebecca, 91, 94
 McGuire, Robert, 76, 91, 94, 99
 McGuire, Samuel, 91, 94, 96
 McGuire, Sarah, 74, 78, 91, 92, 93-94
 McGuire, Susan, 73, 91, 93, 97
 McGuire, Susan Malinda, 80
 McGuire, Thomas, 96
 McGuire, Thos., 91, 94
 McGuire, William, 73, 74, 75, 76-77, 81, 92, 97
 McGuire, William R., 75
 McGuyre, Peter, 94, 96
 McGuyre (McGuire), 91, 94
 McGwire (McGuire), 91, 94
 McIntosh, 81
 McKinney, 31, 33, 39
 Miller, John, 75
 Moore, Robert, 74, 75
 Morton, 81
 Myers, Daniel, 75
 Myers, Susan, 91, 92
 Myers, Susannah, 75

N

Norris, Gilmer W., 31, 33, 44

O

Oler, Shirley Yarbrough, 21

P

Peebles, William, 94

S

Simpson, William, 39
 Slaughter, William H., 75
 Smith, 74, 81, 91, 92, 94, 96, 102
 Smith, David, 74
 Smith, John, 97
 Smith, Oleta Irene, 22, 26
 Smith, Robert, 73, 97
 Stephens, Sarah, 78
 Stephens, Sarah M., 97
 Stewart, Guy, 30
 Strange, Frances, 73, 97
 Strange, Robert, 74
 Strange, William, 73, 74-75
 Sturgis, Bob, 31, 33

T

Taylor, Nina Jayne, 31, 33, 39
 Taylor, William Sloaner, 39

W

Whitlock, James H., 93
 Whitlock, William R., 92
 Whitlock Nancy John, 93
 Whitson, Susan, 91, 92
 William Manrin Yarbrough, 28
 Willis, Thomas, 70
 Wiseman, James, 74
 Wiseman, Sarah, 74
 Wood, 27
 Wood, Gene, 22, 27
 Wyatt, Annie, 10, 31, 33, 49
 Wyatt, Nora Lou, 10, 20

Y

Yarblow, Christian, 70
 Yarborough, 3, 69, 70
 Yarborough, Richard, 69, 70
 Yarborough, William, 69
 Yarbrow, William, 92
 Yarbrow, 81
 Yarbrow, James, 81
 Yarbrough, 2, 3, 29, 30, 31, 38, 39, 40, 41, 42, 48-49, 57, 67, 102, 103
 Yarbrough, Richard, 67
 Yarbrough, William Thomas, 13
 Yarbrough, Alice J., 49
 Yarbrough, Ambrose, 3, 70
 Yarbrough, Annie Lee (?), 46
 Yarbrough, Annie Lee (?), 44, 45
 Yarbrough, Buster, 38
 Yarbrough, Calvin Jerrell ("Tuffy", 102
 Yarbrough, Charles, 68
 Yarbrough, David, 46
 Yarbrough, Edmund, 5, 7, 47, 65, 67-69
 Yarbrough, Edward, 68, 69, 97
 Yarbrough, Elizabeth, 97
 Yarbrough, Ella, 10
 Yarbrough, Glenn, 22, 38
 Yarbrough, Henry, 64, 67
 Yarbrough, James, 67
 Yarbrough, James H., 49
 Yarbrough, Jerry, 102
 Yarbrough, John, 57
 Yarbrough, John B., 49
 Yarbrough, John H., 64, 67
 Yarbrough, Jonathan, 67
 Yarbrough, Joseph, 64, 67
 Yarbrough, Joshua, 50
 Yarbrough, Kim, 46
 Yarbrough, Mary, 67
 Yarbrough, Milton Wyatt, 34, 35, 46
 Yarbrough, Modell, 22
 Yarbrough, Myrtle, 27

Yarbrough, Myrtle Cordelia, 22, 28, 29
Yarbrough, Nancy, 57, 67, 91, 92, 94
Yarbrough, Obedience, 97
Yarbrough, Odus Columbus, 10, 28
Yarbrough, Olon Judon, 28, 29
Yarbrough, Oran Odean, 28, 29
Yarbrough, Otis Columbus, 29, 30
Yarbrough, Pasty Lavere, 26
Yarbrough, Pauline Fanny, 22
Yarbrough, Philip, 46
Yarbrough, Rachel Shelby, 64
Yarbrough, Reba Mae, 26
Yarbrough, Richard, 1, 67
Yarbrough, Robert Cecil, 20
Yarbrough, Robert Leonard, 31, 35
Yarbrough, Rodney, 102
Yarbrough, Ruby Susan, 28, 29
Yarbrough, Shirley, 29

Yarbrough, Shirley Dean, 26
Yarbrough, Sohpie Goswick, 65
Yarbrough, Thelma Olean, 31, 35, 43
Yarbrough, Thomas William, 45
Yarbrough, Trulon Olive, 28
Yarbrough, Velma Pauline, 31, 33, 35, 42
Yarbrough, William, 29, 56, 57, 63, 64, 67
Yarbrough, William Marvin, 29
Yarbrough, William Thomas, 1, 7-8, 13, 39, 40,
41, 42, 43, 44, 45, 80, 81, 91, 94, 96
Yarbrough, Winny, 7, 47, 49, 56
Yarbrough-Fisher, Nancy, 64
Yarbruugh, William Marvin, 29

[Created with TExtract /www.Texyz.com]